

Dear Classic Auto Enthusiast,

Bill Hirsch Automotive has been servicing the auto restoration market for the past 42 years. We began by supplying hard to find colors of engine enamels for antique and classic cars, and had to expand our inventory to include materials used for re-upholstering these same cars. We realized that there was a need for these original materials, especially in cars that were to be exhibited in shows. In order for one of these classics to increase in value, or even maintain its value, only the finest materials must be used.

At Bill Hirsch Automotive we pride ourselves in providing you with the finest quality products along with the best possible personal service. You will find that our customer response is prompt and courteous. You will never become just a number with us.

Please feel free to call us regarding product information on items in this catalog, or any other item you need. If we can help you, we will.

Thank you,

Bill  
Hirsch

**Bill Hirsch**  
President

How to Order

Order by mail, phone, fax, or email

Toll Free (US only)	800.828.2061
Overseas & NJ	973.642.2404
Fax	973.642.6161
Email	info@hirschauto.com
Website	www.hirschauto.com

Please include part number (if any) and a description of the item or material (color, size, stripe, plain, etc.) for our quick Identification.

Payment

Please include a check, money order, or Visa or Mastercard number with expiration date, with your order. Orders outside the US must include an International Money Order payable in US funds, or Visa or Mastercard number.

Prices

We will try to maintain all prices in this catalog. However, prices are subject to change without notice. If there is a substantial price change on your order, we will notify you accordingly.

Return Merchandise

No item may be returned without prior approval. Please notify us of your intent to return an item either by phone or letter, stating reasons for return. Custom made items such as upholstery sets, carpet sets, convertible tops, etc., may not be returned unless made incorrectly or defective. All cut goods such as upholstery fabrics, carpet material, top material, and leather hides should be examined immediately upon receipt for defects. Once material has been cut by customer, it cannot be returned. All returned items must be returned freight prepaid and must be returned within 30 days of delivery.

Limited Warranties

The sellers products are not guaranteed for any specific length of time, measure of service or fitness for a particular use but are warranted to be free from defects in workmanship and material, and all goods shall be subject to seller's normal manufacturing tolerances and quality control procedures.

The seller's liability for breach of the above warranty is limited to refunding the purchase price of the merchandise, or, at the seller's option, to replace upon its return. Under no circumstances shall the seller be responsible for any other form of consequential damage including installation costs, removal costs, application costs, damage to associated products, or loss of profit arising out of the use or inability to use the product supplied.

No claim for any breach of warranty herein shall be valid unless delivered only in writing to the company within thirty (30) days after the date of delivery of the above mentioned shipment.

For Extra Fast Service

We accept phone orders and ship UPS. Orders can be charged to Visa, or Mastercard. COD orders are accepted, however, we may require a money order or cashier's check depending on the total order. UPS overnight delivery is available.

Call our Toll Free Line for any answers to your questions.





## World’s #1 Engine Enamels

Hirsch Automotive Products has the highest quality, hi-temperature rated, hi gloss engine enamels available. Over 50% of high point scoring cars shown at leading car shows all over the world have Bill Hirsch Engine Enamel on their engines. Gives you a “factory look finish”. The best available—nothing else compares.

Rated to 600 Degrees F

EE	Quart	\$34.00
EEA	14 oz.	\$15.00

Most colors available  
in quarts and aerosol.

Also available: *Hi-Temp Engine Primers*—Red Oxide, Light Gray, White, Black

Aerosol	14 oz.	\$6.95
---------	--------	--------

<b>Auburn</b>	Green
<b>Austin Healy</b>	Green
<b>Buick</b> Early – 1922-1930	Green
<b>Buick</b> 1933-1938	Green
<b>Buick</b> 1939-1940	Charcoal Gray
<b>Buick</b> Early – 1941 only	Red
<b>Buick</b> All 1942-1952 Models, 1953 Specials	Turquoise
<b>Buick</b> Late – 1953-1965	Green
<b>Buick</b> Late – 1966-1971	Red
<b>Cadillac</b> 1935-1948	Green
<b>Cadillac</b> 1949-1976	Dark Blue
<b>Cadillac</b> 1977-1981	Light Blue
<b>Chevrolet</b> 4 cyl. only	Green Gray
<b>Chevrolet</b> 6 cyl.	Gray
<b>Chevrolet</b> 6 cyl.	Blue
<b>Chevrolet</b> Most V8's	Orange
<b>Chevrolet</b> V8's 1956 only	Red
<b>Chrysler</b> 1964-1969 273 CI, 1968-1983, All 318 CI Eng. 1969-1972	Red
<b>Chrysler</b> 1970-1971 340 CI, 426 CI 1966-1971 Street Hemi, Hi Perf. 383 & 440 CI 1969-1971	Hemi Orange
<b>Chrysler</b> All Prod. Eng. 1973-1983 All 318 CI Eng. 1969-1972	Blue
<b>Duesenberg</b>	Green
<b>Edsel</b>	Green

<b>Ford</b>	T-Bird Red
<b>Ford</b> A's, B's, V8's to 41-42	Green
<b>Ford</b> 1941-1942 up to 48	Blue
<b>Ford</b> 1949-1951 Flathead V8's, some 52-53	Bronze
<b>Ford</b> 1952-1953 Flathead V8's	Orange
<b>Ford</b> for all Ford Products including Mustang, Merc, T-Bird, Lincoln & Continental 1963/1967	Medium Blue
<b>Ford</b> Aerosol only – 1964-1965 accessories	Gold
<b>GM</b> for all GM Cars 1977 on with Rear Wheel Drive	Blue
<b>Kaiser Fraser</b> Most Models	Green
<b>Lincoln</b> Early L Type for engines & firewalls up to 1929	Gray
<b>Lincoln</b> 1936-1948 V12 Engines	Green
<b>Lincoln/Mercury</b> for 1952/1956 Lincoln except Cont. & 1954/1956 Merc.	Light Green
<b>Mercury</b> 1949-1951	Green
<b>MG</b> 1945-1948 TC Eng. & Firewall	Green
<b>MG</b>	Maroon
<b>Olds</b> Early – 1928-1948 6 & 8 cyl. 49-50 6 cyl.	Green
<b>Olds</b> Late – 1949-1956 8 cyl.	Green
<b>Olds</b> All 1957-1958 models	Gold
<b>Olds</b> 1959-1962	Turquoise
<b>Olds</b> Late – 1964-1967 330 CI Eng. & 1968-1976 350 CI Eng.	Gold

<b>Olds</b> For all 1965-1969 400 CI Eng.	Bronze
<b>Olds</b> All 455 CI Eng. 1966 on	Metallic Blue
<b>Packard</b> To 1915-1947	Green
<b>Packard</b> 1948-1954 Exc 359 CI	Gray
<b>Packard</b> 1954 359 CI & 1956 Big Engines only	Bronze
<b>Packard</b> 1955 Clipper 352 Engines only	Red
<b>Packard</b> 1955 Clipper 320 Engines only	Turquoise
<b>Packard</b> 1955 Big Engines only	Ivory
<b>Pontiac</b> All 1930-1939	Green
<b>Pontiac</b> 1940-1957 exc. Bonneville	Blue/Green
<b>Pontiac</b> 1957 Bonneville, all 1958	Turquoise/Blue
<b>Pontiac</b> 1959-1965 all models	Light Blue
<b>Pontiac</b> Early – 1966-1972	Metallic Blue
<b>Pontiac</b> Late – 1974-1976	Metallic Blue
<b>Studebaker</b> All Flatheads	Green

<b>Aluminum</b> Also for Packard Crank Cases, Transmissions & Lower Blocks where natural aluminum effect is desired	
<b>Black</b> Also for Engine Accessories and Firewalls	
<b>Medium Gray</b> Some cars other than Chevy or Buick where Gray is required	

## Nitro-Cellulose Lacquer

We are still able to offer this Hi-Quality, Hi-Gloss body paint. Stock colors are black & clear, but any color can be custom made. There is a 4 gallon minimum on custom color orders.

Nitl-01	Clear	Gallon	\$65.00
Nitl-02	Black	Gallon	\$85.00
Nitl-03	Custom	4 Gal.	\$90.00 per Gal

\*Red, Maroon & Metallic - Add Additional Charges



## Fuel Preservative & Stabilizer

Prevents gum, varnish formation and corrosion in fuel tanks and fuel systems. Absolutely a must for cars, boats, planes or any equipment where the fuel sits idle in a tank for 30 days or more. One ounce of this product will keep 3 gallons of fuel fresh for at least 3 years. Contains no alcohol that attacks some metals. Will not attack rubber parts or diaphragms as most others do. Unlimited shelf life. Safe for all 2 or 4 cycle engines. One quart will protect 100 gallons of fuel for over 3 years.

<b>RETARDS DECAYING OF ETHANOL FUELS!</b>		
Fps-01	Quart	\$17.95



## Miracle Paint #1 Rust Killer

A moisture cured non-porous paint that bonds to rusted and corroded metals like no other coating. It dries rock hard and will not crack, chip, or peel. Impervious to gasoline, lacquer thinner, salt and most acids. Can be painted directly over rusted surfaces. Is strengthened by moisture. Will seal concrete, grout, wood metal and porous tile like nothing else. Can be sprayed, rolled or brushed. Comes with disposable gloves and valuable product information sheet. Available in Black, Silver & Clear. (See Miracle Solvent for clean-up & thinning)

Mir-P	(S,B,C)	Pint	\$22.00
Mir-Q	(S,B,C)	Quart	\$32.00
Mir-G	(S,B,C)	Gallon	\$95.00

### Heavy Duty Formula

This is the heavy duty version of our famous paint. Use this version for rust areas that require a thicker coat or where extremely heavy rust is present. Available in Black or Silver.

Pint	\$24.00
Quart	\$34.00
Gallon	\$103.00

## Miracle Solvent/Thinner

Made specially for thinning and cleanup of Miracle Paint, this all purpose solvent can be used to thin most non-latex paints. Excellent for cleaning brushes and general cleanup work where a petroleum based solvent is required.

Mir-4	Quart	\$11.00
-------	-------	---------

\*PRICES SUBJECT TO CHANGE WITHOUT NOTICE.\*





## Super Black Chassis Paint

The finest black chassis paint, now available in three sizes. Not glossy, not dull, but a very high quality semi gloss paint that is the most resistant to chipping, cracking, peeling and salt. An excellent paint for the engine compartment of your car as well. Outlasts and outperforms any other similar product.

Chpt-01A	16 oz.	Aerosol	\$15.00
Chpt-01	Quart		\$28.00
Chpt-03	Gallon		\$81.00



## Hi-Temp Exhaust & Manifold Paints

### Space Age Bright Aluminum

The only finish of its type that will withstand 2000 degrees F temperature. Withstands salt, moisture and virtually all weather conditions.

Empt-15	Pint		\$27.00
Empt-15A	16 oz.	Aerosol	\$17.00



### Space Age Black

The only 2000 degree F black finish of its type on the market. Imparts a soft silky black finish to any exhaust system. Long lasting, easy to apply and fast drying.

Empt-16	Pint		\$27.00
Empt-16A	16 oz.	Aerosol	\$17.00



### Stainless Steel

Made from stainless steel powder, this fine finish has recently been upgraded to 1600 degrees F. Will impart a pewter gray look to your manifold. Highly resistant to weather changes.

Empt-03	Pint		\$27.00
---------	------	--	---------



### Cast Iron Gray

No other product like it on the market. Dries with the look of freshly sandblasted cast iron. Highly resistant to all weather and temperature changes.

Empt-14	Pint		\$27.00
Empt-14A	16 oz.	Aerosol	\$17.00

\*PRICES SUBJECT TO CHANGE WITHOUT NOTICE.\*

## Specialty Aerosols

### Black Wrinkle Finish

Great coverage and finish for parts that require a wrinkle finish. Works on dash boards, valve covers,wire holders and more.

SA-BW	16 oz.	Aerosol	\$10.00
-------	--------	---------	---------

### Alumi Blast

Helps duplicate the original finish many of your car's metal parts had. Bright aluminum finish that is heat resistant to 300 deg F. Helps keep parts looking new for years.

SA-AB	16 oz.	Aerosol	\$10.00
-------	--------	---------	---------

### Chrome Brite

So bright that it is almost like a chrome plated finish. Perfect for using on the back of bumpers, reflective surfaces or anywhere your vehicle requires a chromed look. Extremely durable.

SA-CB	16 oz.	Aerosol	\$10.00
-------	--------	---------	---------

### Sun Burst

Brilliant, sparkling, sunburst finish. Also called argent silver paint. Great for reflective surfaces. Spray on and find a textured durable finish.

SA-AGT	16 oz.	Aerosol	\$10.00
--------	--------	---------	---------

### Stainless Steel

This stainless steel coating is extremely durable. It provides a natural stainless steel look with the advantage of being rust proof.

SA-SS	16 oz.	Aerosol	\$10.00
-------	--------	---------	---------

## Primers

Spray on even and smooth. Easy to use, fast drying, specially formulated. Prevents rust while enhancing the finish coat with filling and sealing properties. Perfect to use before applying finish coatings on smooth surfaces.

### Universal Primer

Black, White, Red Oxide, or Grey.

12 oz.	Aerosol	\$6.95
--------	---------	--------

### Hi Temp Primer for Hi Heat Application

Heat resitant to 1200 deg F. Perfect to use before applying our hi temp exhaust/maifold paints to smooth surfaces. Dark Grey Color.

14 oz.	Aerosol	\$14.00
--------	---------	---------

### Self Etching/Weld Though Primer

Works on most amooth surfaces. Light Grey Color.

20 oz.	Aerosol	\$13.00
--------	---------	---------



See samples of these colors online at our website: [www.hirschauto.com](http://www.hirschauto.com)



Chemical Products

Cleaner & Degreaser

The best and safest cleaner of its kind on the market. Use this product to clean out gummy fuel tanks or to clean and degrease engines or machinery. Works on all metals, porcelain, tile and fiberglass. Clean windows without leaving streaks. Highly concentrated, non-toxic, non-flammable, biodegradable. Rinses off completely with water. Special spray bottle included.

CD-3001	1 Gallon	\$23.00
	1 Quart	\$11.00

Parts Wash

Powerful formula- environmentally friendly for use in parts washers, dip tanks, etc. Can also be sprayed on. One gallon makes 4 gallons of the best and safest parts wash you have ever used- completely re-useable. Non-flammable and biodegradable. A must for every garage and restorer.

4001	1 Gallon	\$21.00
------	----------	---------

Rust Remover and Metal Prep

The very best product on the market for removing rust. Not only will this liquid product safely and quickly remove rust, but it will leave a gray phosphate coating on the metal to provide an excellent base for painting and welding conductivity. Can be sprayed or applied to area normally impossible to remove rust from before. Etches aluminum, brass, copper, and chrome plate to prep for painting. It will even remove nickel plate without harming painted surfaces. Non-flammable, non toxic, biodegradable. One step process for brush, spray or dip application. Reusable.

RR-1000	20 oz.	Spray Bottle	\$18.00
RR-1001	1 Gallon	Sprayable Formula	\$32.00
RR-2001	1 Gallon	Gel Formula	\$34.00

Paint Stripper

An excellent product to remove all paints in a fraction of the time it takes with regular strippers. This will not damage glass, chrome, rubber, fiberglass or aluminum. It will remove all paints, varnishes and marine finishes. No brushing necessary. Easy cleanup. Complete with special spray bottle.

PR-5001	1 Gallon	Liquid Formula	\$30.00
PR-815	1 Gallon	Gel Formula	\$30.00

Paint Stripper—Aerosol

An incredible product for small and detail jobs. Dispenses a thick gel that sticks fast to whatever it is sprayed on and will not run, even on vertical or inverted surfaces. Works fast and clean. The only aerosol paint stripper and remover of its kind on the market. You have to use it to believe it.

PR-5000A	18 oz.	Aerosol	\$11.95
----------	--------	---------	---------

Rust Inhibitor

Strip now and paint later. Sandblast or strip all of your parts now without having to worry about them rusting before you paint them. After stripping or sandblasting, spray on a light coat of our Miracle Rust Inhibitor and your parts will be safeguarded against rusting. You can then paint as many or as few parts as you wish, when you wish to do them. Parts can be sprayed or dipped. Easily washed off with water. Nonflammable, non-toxic and biodegradable. Comes with a special spray bottle.

RI-2001	1 Gallon	\$24.00
---------	----------	---------

World Famous Gas Tank Sealer & Etch

Gas Tank Sealer

Stops rust, leaks & corrosion permanently. Resistant to all fuels including the new Phase II oxygenated fuels. Heavily compounded with rust inhibitors. Permanently bonds to all metal or fibre-glass gas tanks. The only sealer on the market approved for use in aircraft. Outsells all other sealers on the market combined. Over 1,500,000 cans sold in over 27 countries since its introduction. It's in a class by itself...

Gts-04	Pint	\$18.00
Gts-05	Quart	\$26.00
Gts-06	Gallon	\$81.00
Gts-07	5 Gallon	\$335.00

Gas Tank Etch

Will Remove light buildup of rust inside of all tanks and will etch the inside of the tank leaving a gray phosphate coating. An excellent prep for your tank before introducing gas tank sealer.

TE-01	Pint	\$10.95
-------	------	---------

Automotive Fuel Tank Repair Kit

This item combines three of our products into one complete kit that no restorer should be without. It is a three step process which includes: 1. cleaner and degreaser, 2. etch, 3. alcohol resistant gas tank sealer. The kit also includes a stop putty which instantly seals holes, dries rock hard, and can be sanded. Detailed step by step instructions ensure a successful and permanent repair of your tank. Works well with all metal and fiberglass tanks.

ARK-01	\$42.00
Kit includes: 1 quart cleaner/degreaser, 1 pint tank etch, 1 quart tank alcohol/ethanol resistant sealer, 1 piece metal putty	

Motor Cycle Fuel Tank Repair Kit

A complete professional quality cycle tank repair kit that excels. Kit includes our world famous alcohol/ethanol proof sealer, tank cleaner, etch, and our miracle epoxy putty that will allow you to do an emergency stop leak repair without even draining the tank first. - Kit also includes gloves and detailed step by step instructions that ensure a successful and permanent tank repair.

CRK-01	\$29.95
--------	---------

DOT-5 Silicone Brake Fluid

Not all silicone brake fluids are the same. Ours is 1 of only 2 used by the U.S. Government. Our DOT-5 is the very best made, meeting and exceeding all U.S. military specs, Federal Motor Vehicle and SAE specs.Can be used with all types of hydraulic brake systems. Will not mar the finish of your car. Not to be used with other types of brake fluid. Complete detailed instructions included with each container.

SBF-1	Quart	\$20.00
SBF-2	Gallon	\$58.00

\*PRICES SUBJECT TO CHANGE WITHOUT NOTICE.\*





Ragtopp Cleaner

Safely removes the toughest roof and soil stains. Will not harm automotive finishes, chrome, trim, glass, vinyl, rubber or plastic windows. Environmentally friendly and biodegradable, anti-oxidant formula. Easy to rinse off, retards growth of mildew. A truly amazing canvas and vinyl cleaner that is tested and endorsed by Haartz Automotive Fabrics, who makes most convertible top material found on new and classic cars. Very easy to use. 16 oz. Bottle comes with Sprayer.

RTC-01      \$12.00



Ragtopp Vinyl Protectant

Protect your vinyl top. Exclusively formulated for exterior protection. Contains no silicone or petroleum distillates. Unique patented formula will not harm automotive truck finishes, chrome, trim, glass, vinyl, rubber or plastic windows. First and only vinyl protectant to use Ciba Tinuvin ultraviolet (UV) blocking absorbers that repel the growth of mildew, dust, grease and dirt. Can be safely used on sport utility tops, cabras, truck/tonneau covers. 16 oz. Bottle comes with Sprayer.

RTVP-01      \$16.00



Ragtopp Protectant

Fantastic product that does it all. Perfect for all canvas convertible tops. Restores water repellency to old canvas. Improves repellency to new canvas. Repels standing water. Blocks out ultraviolet rays. Keeps fabric soft and supple. Helps to maintain color in fabric and canvas. Comes in 14 oz. spray can. Quick dry application.

RTP-01A      \$17.00

Leather & Vinyl Care Products

Miracle Leather & Vinyl Cleaner

Bill Hirsch leather and vinyl cleaner penetrates leather and vinyl upholstery to deep clean and restores natural oils at the same time. Will remove dirt and grime trapped deep in leather or vinyl and will revive stiff vinyl. This is the very best product made for one step cleaning and conditioning. This product contains natural oil. No silicone! Non-toxic, non-flammable, water soluble.

MLC 2      Pint      \$25.00  
MLC 3      Quart      \$40.00

Miracle Leather & Vinyl Crack Filler

While this product was not designed to fill in large holes or tears, it will repair small cracks. It is a white putty type product that is applied by hand, putty, knife or small spatula. Gives great results. Non toxic, non-flammable, water soluble.

MCF-1      4 oz. Jar      \$10.00

Miracle Leather & Vinyl Softener & Rejuvenator

Don't replace that old leather or vinyl yet. Try our Miracle Leather & Vinyl Softener and Rejuvenator first. Proper application of this product will actually soften up "cardboard hard" leather and vinyl that has become dried out from the sun and heat. A once a year application will also keep good leather from getting hard and dry. Just brush it on and leave it soak into the leather or vinyl. Wipe the excess off with a wet towel. Non-toxic, non-flammable, water soluble.

MLR-1      Pint      \$16.00  
MLR-2      Quart      \$27.00  
MLR-3      Gallon      \$79.00

Connolly Hide Food

Made in England by the producers of the world famous Connolly Leather. This soft creamy formula is easily applied and will keep your leather soft and supple for years to come. This premier leather conditioner is considered the best product of its kind in the world.

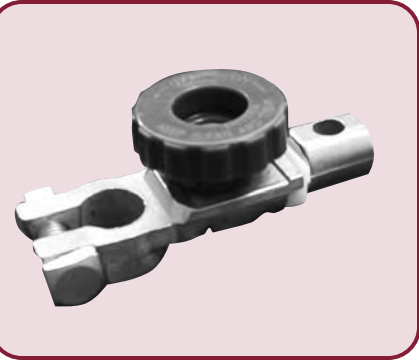
CHF-01      11 oz. Jar      \$20.00



\*PRICES SUBJECT TO CHANGE WITHOUT NOTICE.\*

\*PRICES SUBJECT TO CHANGE WITHOUT NOTICE.\*





## Battery Cut-Off Switch

The Battery Cutoff Switch allows you to shut the battery off during times of storage do the battery does now get run down. All power is cut off to prevent unnecessary drain on your battery. This little wonder works great as an anti theft device too; at the turn of a knob, no one will be able to start your car.

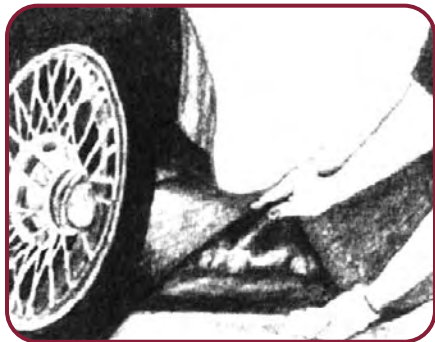
BCS-01      \$10.00



## Garage Mat

No garage is complete without this product. Use under cars, trucks, motorcycles, buses or any space you want to keep clean. This amazing mat absorbs up to 25 times its weight in water, oil, paint, and other toxic/industrial chemicals. Garage Mat meets all specifications for the U.S. military, federal, city and state governmental agencies as well as Fortune 500 companies. This product is backed with a special new material that soaks up anything your garage can offer. There is nothing better for absorbing spills, keeping your space clean and making your garage safe. Thousands of uses, machine washable, and can be cut with scissors to fit any application.

GM-1      3' x 5'      \$16.00  
GM-2      3' x 50'      \$119.00



\*PRICES SUBJECT TO CHANGE WITHOUT NOTICE.\*

## Car Covers

**Many Great Types To Choose From**  
**Most Covers Come With A Free Lock & Cable!**  
**For Custom Fit Quotes Visit [www.cabrioworld.com](http://www.cabrioworld.com) For Pricing.**



**Protect Against:**  
**Sun • Rain • Snow • Salt • Heat •Dust • Scratches**

### Poly-Cotton

Highly resistant to sun, rain and mildew. Allows for moisture evaporation, but best suited for indoor use. Machine washable, breathable, heavy duty and very light in weight. Gray Only.

**Pricing available online**

### Flannel

Soft napped, flannel underside prevents scratching to valuable paint finishes. Our kindest to the paint cover for the true car lover. Over 50% heavier than the polycotton above. Gives longer wear and increased capability to withstand exposure to sunlight. While water resistant and suitable for very limited outdoor use, this cover is highly recommended for years of indoor use only. Available in Tan.

**Pricing available online**

### Duralon

Exceptional cover for outdoor use with the utmost protection against all the elements and weather conditions. Used extensively in the marine field under the name" sunbrella". Available in 6 fadeproof colors: marine blue, sky blue, toast, black, cadet gray & saddle brown.

**Pricing available online**

**More materials available. Visit [www.cabrioworld.com](http://www.cabrioworld.com)**

## Mercedes Benz Interiors

We carry a large line of replacement interior parts for Mercedes Benz. All materials used to make the goods are new original style Mercedes

Benz leather, vinyl, carpeting or headliner materials. Contact us for samples of the materials we use. Or send your sample in for us to match to. All prices are per item.

Call for pricing. Many models available, 1950 to Present.

\*PRICES SUBJECT TO CHANGE WITHOUT NOTICE.\*







### Mercedes Benz Convertible Tops

We stock a full line of SL and SE tops in all original colors. We have the original German material and the American Stayfast with the German underside. Both are the highest quality tops available at the best prices. Some special colors available as well.

These tops are cut and sewn with laser precision, heat sealed and include the rear plastic window. Rubber window seals included for 107 and 113 body cars.Contact us for samples. Special order tops also available.

Item #	Description	Price
SH 107	STAYFAST WITH GERMAN UNDERSIDE 107, 113, 121 BODY	\$410.00
HA 107	ORIGINAL GERMAN MATERIAL 107, 113, 121 BODY	\$485.00
SH 198	STAYFAST WITH GERMAN UNDERSIDE 198 BODY	\$475.00
HA 198	ORIGINAL GERMAN MATERIAL 198 BODY	\$595.00
SH/SE	STAYFAST WITH GERMAN UNDERSIDE FOR 220 SE, 220 SEB,250 SE 280 SE, 300 SE.	\$552.00
HA/SE	ORIGINAL GERMAN MATERIAL FOR 220 SE, 220 SEB, 250 SE 280 SE, 300 SE.	\$652.00
SH 129	STAYFAST WITH GERMAN UNDERSIDE FOR 129 BODY 300-500 SL	\$592.00
HA 129	ORIGINAL GERMAN MATERIAL FOR 129 BODY 300-500 SL	\$716.00
HA 186	ORIGINAL GERMAN MATERIAL FOR 186 BODY (4 DOOR CONVERTIBLE SEDANS)	\$850.00

*\*Call for Special Color pricing and other Top pricing.*



### American Car Convertible Tops

We make tops for almost every year American Car from 1935 to date. Some earlier years are available as well. We have a large selection of original and new colors. All tops made from U.S. pinpoint vinyl or American Stayfast. All tops come.with pads and rear plastic window and curtain. Boot covers, well liners, replacement glass windows, pumps cylinders and hoses are available for most cars.Variety of colors in both vinyl and Stayfast. All tops are guaranteed to fit.

Item #	Description	Price
AC	AMERICAN VINYL CONVERTIBLE TOP	\$300.00 and up
B	AMERICAN VINYL BOOT COVER	\$180.00 and up
AS	AMERICAN STAYFAST CONVERTIBLE TOP	\$650.00 and up
W	WELL LINER (VINYL)	\$70.00 and up
MT	MODEL T TOPS ROADSTER & TOURING	Inquire
G	REPLACEMENT GLASS WINDOW (STANDARD) 1964 & up	\$150.00 and up
GT	REPLACEMENT GLASS WINDOW (WITH TINTED)	\$175.00 and up
GD	REPLACEMENT GLASS WINDOW (WITH DEFROST)	\$200.00 and up
JJ	JEEPSTER TOP	\$325.00 - \$475.00
JC	JEEPSTER SIDE CURTAINS	\$320.00 - \$460.00
PC	POWER CYLINDERS (WINDOW, SEAT, TRUNK & DECK)	\$140.00
PP	PUMP (TOP MOTOR 1954-72/12 VOLT HORIZONTAL TRUNK MOUNT)	\$269.00
TS	TACKING STRIP FRONT & REAR	\$2.25 per foot
MFG	METAL FRAME & GLASS AVAILABLE IN 3 SIZES: 6' X 22'	\$240.00
	8' X 23'	\$240.00
	9' X 26'	\$260.00

*\*PRICES SUBJECT TO CHANGE WITHOUT NOTICE.\**

### Molded Carpet Sets

All are original style nylon loop or cut pile. Available for most American cars, trucks and sport utility vehicles from 1949 to present. Prices for full interiors of wagons,trucks and sport utilities can be slightly higher. Molded carpet sets come with matching vinyl binding and heel plate as well the felt underpadding.

Item #	Description	Price
CS-1	MOLDED CARPET SET (NYLON LOOP OR CUT PILE)	\$170.00 and up
CS-2	CUT AND SEW CARPET SET *LIMITED	\$170.00 and up
CS-3	CUT AND SEW CARPET SET IN OTHER CARPET AND FOR EUROPEAN CARS	Inquire

### Carpet Materials

We stock a huge inventory of carpet materials. Our materials are top quality and have been installed in 100 point show cars all over the world. Our Wilton I carpet is used on Rolls Royce, Bentley and many early American cars like Packard, Cadillac, Lincoln etc. WiltonII is used in Ferrari, Maserati, Lamborghini and many other fine European Cars. Wilton III is used in Jaguars, later model American Cars and other European Cars. Inquire today. Hundreds of colors to choose from. Contact us for color samples, or send them in to us to match for you.

Carpet Type	Details & Width	Price per Yard
Wilton I	36" WIDE JUTE BACK (Wool)	\$60.00
Wilton I	48" WIDE JUTE BACK (Wool)	\$79.00
Wilton II	36" WIDE JUTE BACK (Wool)	\$70.00
Wilton III 600 Series	50" WIDE RUBBER BACK (Wool)	\$70.00
Wilton III 700 Series	42" WIDE RUBBER BACK (Wool)	\$70.00
WOOL VELVET	48" WIDE JUTE BACK	\$35.00
JAGUAR (PLP)	47" WIDE JUTE BACK	\$60.00
MERCEDES BENZ SQ. WEAVE	40" / 48" WIDE / 54" WIDE	\$61.00 - \$80.00
MERCEDES BENZ LOOP	40" / 60" WIDE / 65" WIDE	\$65.00 - \$75.00
MERCEDES BENZ VELOUR	60" WIDE	\$66.00
PORSCHE SLIVER KNIT	59" WIDE	\$55.00
SQ. WEAVE TRUNK LINING		\$15.00 and up
HARDURA TRUNK LINER		\$48.00
JAG TRUNK LINERS (OTHER)	XJS, XJ6 & XJ 12	\$32.00
RB 200 SERIES	40" WIDE RUBBER BACK (BLEND)	\$45.00
NEW HOGSHAIR	48" WIDE (AVAIL. IN BROWN,BLACK) 40" WIDE (AVAIL. IN RED,BLUE)	\$72.00 \$55.00
NYLON CUT PILE	40" / 80" WIDE	\$19.95 / \$26.95
NYLON LOOP	40" WIDE	\$19.95

### Carpet Binding

Type	Details	Price
LEATHER	ALSO USED AS SEAT PIPING. SCIVED TO .025. 1-1/2" WIDE	\$9.00 per yard
VINYL	ALSO USED AS SEAT PIPING. 1-1/4" WIDE	\$1.75 per yard
CLOTH	IMPORTED FROM GERMANY IN MANY COLORS	\$0.75 per yard
	27.5 Yard Roll	\$15.00
	55 Yard Roll	\$30.00
	110 Yard Roll	\$55.00

*\*PRICES SUBJECT TO CHANGE WITHOUT NOTICE.\**



Rolls Royce / Bentley Interiors

Replace the interior of your Rolls Royce or Bentley with the finest quality materials and craftsmanship available. All leather pieces are matched to original Connolly Colors. All carpet pieces are made from Wilton I Wool Carpet except trunk carpet pieces. All cloth pieces are made from West Of England Wool Broadcloth. All pieces are hand crafted and first quality.

Rolls Royce Silver Cloud I, II, III & Bentley S1, S2, S3

Item	Price Each
<b>CUSHIONS, BACKRESTS, CENTER ARMRESTS – Leather</b>	
Front Cushion Cover (2)	441.00
Front Backrest Cover (2)	521.00
Front Center Armrest Cover & Pad	200.00
Front Bench Cushion Cover	709.00
Rear Backrest Cover	666.00
Rear Cushion Cover	687.00
Rear Center Armrest Cover & Pad	254.00
<b>MORE CUSHION &amp; BACKREST TRIM – Leather</b>	
Rear of Front Backrest Cover (2)	146.00
Front Cushion Retainer Cover (2)	133.00
Front Bench Cushion Retainer Cover	146.00
Rear Side Wing Cover (2)	163.00
Front Door Armrest Cover(2)	127.00
Front Door Leather (2)	243.00
Front Door Leather with Carpet (2)	296.00
Rear Door Leather (2)	224.00
Rear Door Leather with Carpet (2)	275.00
Front Door Pocket (2)	76.00
Assist Strap Recover (2)	138.00
Sun Visor Trim Only (just leather) (2)	61.00
Sun Visor Recovered (2)	265.00
<b>WINDLACE</b>	
Complete Windlace	467.00
Front Door Cowl Windlace	45.00
Front Door Bottom Windlace	74.00
Pillar Post Windlace	47.00
Rear Door Windlace	89.00
<b>HEADLINER – Complete with Package Shelf</b>	777.00
<b>CARPET – Complete Set</b>	1654.00
Front Floor Carpet	505.00
Rear Carpet	412.00
Firewall Carpet	121.00
Kick Panel Carpet (2 pieces)	174.00
Door Bottoms (4 pieces)	254.00
Floor Stud	1.45
Ring and Collar	1.00
<b>COMPLETE TRUNK CARPET – Black Loop Carpet</b>	462.00
<b>SHEEPSKIN OVERLAYS – Standard 4 Piece Set</b>	656.00
<b>SPECIFY:</b> Please advise year and model of car, right or left hand drive, standard or long wheelbase.	

\*PRICES SUBJECT TO CHANGE WITHOUT NOTICE.\*

Rolls Royce Silver Dawn 1949-55 & Bentley R Type 1952-55/ Mark VI 1946-52

Item	Price Each
Front Cushion Cover (2)	544.00
Front Backrest Covers (2)	403.00
Front Backrest Wireon (2)	132.00
Rear Cushion Cover	866.00
Rear Backrest Cover	875.00
Rear Center Armrest Cover	254.00
<b>CUSHION AND BACKREST TRIM</b>	
Rear of Front Backrest Covers (2)	132.00
Front Cushion Retainer Covers (2)	126.00
<b>MISC. TRIM</b>	
Rear Side Wing Covers (2)	165.00
Rear Side Armrest Covers (2)	191.00
Front Door Armrest Covers (2)	130.00
Front Door Leather with Pocket (2)	343.00
Rear Door Leather with Pocket (2)	290.00
Pillar Post Covers (2)	165.00
Sun Visor Recovered (2)	275.00
Assist Strap Replacement (2)	138.00
<b>HEADLINER – Complete including package tray</b>	683.00
<b>CARPET Set Complete</b>	1654.00
Front Carpet with Leather Heelpad	426.00
Rear Carpet	383.00
Cowl Panel Carpet	130.00
Front Door Carpet	92.00
Rear Door Carpet	84.00
Firewall Carpet	281.00
Under Seat Assembly Carpet	344.00
Rear Cushion Retainer Carpet	119.00
Heater Between Front Seats	63.00
Foot Rest	35.00
Floor Stud	1.00
Ring and Collar	1.45
<b>TRUNK CARPET – Complete Black Loop</b>	492.00
<b>SPECIFY:</b> Automatic or Floor Shift, Long or Standard Wheel Base	

Rolls Royce / Bentley Interiors (cont.)

Rolls Royce Corniche & Silver Shadow Convertibles

Item	Price Each
<b>UPHOLSTERY</b>	
Front Cushion Cover (2)	513.00
Front Backrest Cover (2)	593.00
Front Center Armrest & Pad Cover	140.00
Rear Cushion Cover	772.00
Rear Backrest Cover	913.00
Rear Center Arm Cover & Pad	238.00
Front Headrest Cover (2)	143.00
<b>CUSHION AND BACKREST TRIM</b>	
Rear of Front Backrest Cover (2)	140.00
Rear of Front Backrest Pocket (2)	213.00
Front Backrest Retainer (3 pieces)	92.00/3 pcs
Front Cushion Retainer Cover (4 pieces)	163.00/4 pcs
<b>DOOR TRIM</b>	
Front Door Armrest Cover (2)	131.00
Front Door Leather & Carpet (2)	330.00
Front Door Pocket (2)	113.00
<b>MISC. TRIM</b>	
Rear Side Quarter and Armrest (2)	267.00
Sun Visor Trim- leather only (2)	115.00
Sun Visor Recovered (2)	275.00
Console Front and Center (6 pieces)	225.00/6 pcs
<b>WINDLACE – Complete</b>	160.00
Windlace Each	47.00
<b>CARPET – Complete Set</b>	1653.00
Front Carpet with Leather Heelpad	299.00
Passenger's Front Carpet	242.00
Left Rear Carpet	242.00
Right Rear Carpet	242.00
Full Front Center Carpet	246.00
Side of Front Console Carpet	69.00
Rear Center Hump	106.00
Cowl Panel	92.00
Front Door Carpet	93.00
Rear Cushion Retainer	124.00
Lower Front Cushion	49.00
Lower Rear of Front Back	56.00
Carpet Snaps (collar & ring)	1.45
Floor Studs Only	1.00
<b>TRUNK Carpet Set</b>	1214.00
Trunk Floor Area Carpet Only	426.00
<b>CONVERTIBLE TOP –</b>	
In Original British Everflex: Includes headliner material around rear window area	880.00
Same top but in Stayfast material	788.00

\*PRICES SUBJECT TO CHANGE WITHOUT NOTICE.\*

Top Pad and Bag Assembly	385.00
Rear Body Wood Complete (Tack Wood)(5 pcs)	375.00
Everflex Cover for Rear Body Molding	56.00
Everflex Cover for Rear Bow Molding	23.00
Rear Wood Top Bow	429.00
<b>HEADLINER – Complete</b>	740.00
If headliner is ordered with top, price is only	700.00
<b>TOP BOOT – Leather with 22 Tenax Fasteners.</b>	
Padded and Cloth Backed	1044.00
Top Boot Bag in Black Everflex	151.00

Rolls Royce Silver Spirit/Silver Spur & Bentley Mulsanne

Item	Price Each
Front Cushion Cover (2)	512.00
Front Backrest Cover (2)	598.00
Front Center Armrest Cover	230.00
Rear Cushion Cover	971.00
Rear Backrest Cover	822.00
Rear Center Armrest Cover	218.00
Front Headrest Cover (2)	132.00
Rear Headrest Cover (2)	109.00
<b>CUSHION AND BACKREST TRIM</b>	
Rear of Front Backrest Cover	197.00
Rear of Front Backrest Pocket	100.00
Front Cushion Retainer Cover	84.00
<b>MISC. TRIM</b>	
Front Door Armrest Cover (2)	130.00
Rear Door Armrest Cover (2)	135.00
Front Door Leather & Carpet (2)	214.00
Rear Door Leather & Carpet (2)	197.00
Front Door Pocket (2)	63.00
Assist Strap Replacement(2)	144.00
Sun Visor (leather only) (2)	65.00
Sun Visor Recovered (2)	250.00
<b>HEADLINER –</b>	
Complete including material for package shelf	
In Broadcloth	745.00
Headliner in Leather	1550.00
<b>WINDLACE – Full Set</b>	446.00
Doors (4)	163.00
Pillar (2)	49.00







## Rolls Royce / Bentley Interiors

**CARPET** – Complete (models after 1987 inquire) 1653.00

Left Front Carpet	324.00
Right Front Carpet	253.00
Left Rear Carpet	245.00
Right Rear Carpet	245.00
Full Front Center Carpet	255.00
Side of Front Console Carpet	70.00
Rear Center Hump Carpet	70.00
Front Door Carpet	88.00
Rear Door Carpet	84.00
Cowl Panel Carpet	87.00
Rear Cushion Retainer	105.00
Foot Rest Carpet	73.00
Carpet Fasteners (ring & collar)	1.45
Studs Only	1.00
<b>TRUNK</b> – Carpet Set	1150.00
Trunk Floor Only	452.00
Trunk Lid Carpet (black cut pile)	167.00
<b>LANDAU TOP</b> – Original British Everflex	
Standard Wheelbase	761.00
Long Wheel Base	761.00

**SPECIFY:** Please advise year and model of car, right or left hand drive.

### Rolls Royce Silver Shadow I & II, Silver Wraith II, & Bentley T, T2

Item	Price Each
Front Cushion Cover (2)	455.00
Front Backrest Cover (2)	542.00
Front Center Armrest Cover (2)	192.00
Rear Cushion Cover	735.00
Rear Backrest Cover	745.00
Rear Center Armrest Cover	206.00
Front Headrest Cover (2)	117.00
Rear Headrest Cover (2)	108.00
<b>CUSHION &amp; BACKREST TRIM</b>	
Rear of Front Backrest Cover (2)	179.00
Rear of Front Backrest Pocket (2)	91.00
Front Cushion Retainer Cover (2)	81.00

<b>MISC. TRIM</b>	
Rear Side Wing Cover & Piping (2)	105.00
Pillar Post Cover (2)	50.00
Front Door Armrest Cover (2)	124.00
Rear Door Armrest Cover (2)	123.00
Front Door Leather & Carpet (2)	204.00
Rear Door Leather & Carpet (2)	188.00
Front Door Pocket (2)	64.00
Door Pull Cover (2)	49.00
Assist Strap Replacement (2)	138.00
Sun Visor Trim – Leather only (2)	62.00
Sun Visor Recovered (2)	250.00
<b>WINDLACE</b> – Complete Kit	447.00
Windlace Doors (4)	173.00
Windlace Pillar (2)	50.00
<b>HEADLINER</b> – Complete incl. package shelf	777.00
<b>CARPET</b> – Complete Set	1654.00
Left Front Carpet with Leather Heelpad	299.00
Right Front Carpet	235.00
Left Rear Carpet	224.00
Right Rear Carpet	224.00
Full Front Center Carpet	224.00
Side of Front Console Carpet	69.00
Rear Center Hump Carpet	69.00
Front Door Carpet	84.00
Rear Door Carpet	79.00
Cowl Panel Carpet	87.00
Rear Cushion Retainer	105.00
Foot Rest Carpet	74.00
Carpet Fasteners – (ring and collar)	1.40
Floor stud	1.00
<b>TRUNK</b> (Carpet set)	1069.00
Trunk Floor Only (Early style long trunk)	426.00
Trunk Floor Only (3 pcs w/ trunk mounted gas tank.)	434.00
Trunk Floor Only (1 pce W/ trunk mounted gas tank)	378.00
Trunk Lid (Cut pile or loop)	157.00
<b>LANDAU TOP</b> – British Everflex (Long or short WB)	760.00

**SPECIFY:** Please advise Make, Model, Year Left or Right Hand Drive, Long or Standard Wheel Base

\*PRICES SUBJECT TO CHANGE WITHOUT NOTICE.\*

## Packard Parts



### Hubcaps

Year	Description	Price
1932	900 (SHOVELNOSE LT 8)	\$130.00
1932	STANDARD 8	\$130.00
1932	SUPER 8 / TWIN 6	\$130.00
1933-36	STANDARD 8	\$130.00
1933-36	SUPER 8	\$130.00
1933-36	V-12 FOR WIRE WHEELS (NO MEDALLION)	\$130.00
1935-36	ONE TWENTY	\$130.00
1940-41	110	\$130.00
1937	ONE TWENTY	\$80.00 EA, FOUR FOR \$310.00, SIX FOR \$450.00
1937-38	SUPER 8	\$80.00 EA, FOUR FOR \$310.00, SIX FOR \$450.00
1937-38	TWELVE (NO MEDALLION)	\$80.00 EA, FOUR FOR \$310.00, SIX FOR \$450.00
1937-38	SIX (110)	\$80.00 EA, FOUR FOR \$310.00, SIX FOR \$450.00
1938	EIGHT (120)	\$80.00 EA, FOUR FOR \$310.00, SIX FOR \$450.00
1939	SIX (110)	\$80.00 EA, FOUR FOR \$310.00, SIX FOR \$450.00
1939	EIGHT (120)	\$80.00 EA, FOUR FOR \$310.00, SIX FOR \$450.00
1939	SUPER 8	\$80.00 EA, FOUR FOR \$310.00, SIX FOR \$450.00
1939	TWELVE(NO MEDALLION)	\$80.00 EA, FOUR FOR \$310.00, SIX FOR \$450.00
1940-41	120	\$80.00 EA, FOUR FOR \$310.00, SIX FOR \$450.00
1940-41	160	\$80.00 EA, FOUR FOR \$310.00, SIX FOR \$450.00
1940-41	180 (NO MEDALLION)	\$80.00 EA, FOUR FOR \$310.00, SIX FOR \$450.00
1946/50	STANDARD & SUPER	\$145.00 EA
1946/50	CUSTOM 8 (NO MEDALLION)	\$145.00 EA
1953/56	CARIBBEAN FOR WIRE WHEELS	\$55.00 EA

### Hubcap Medallions-Chrome& Cloisonne

Year	Description	Price
1933-39	TWELVE	\$125.00 EA
1940-41	ONE EIGHTY	\$125.00 EA
1946-50	CUSTOM	\$135.00 EA

### Wheel Trim Rings

Description	Price
15", 16", 17" CHROME	\$60.00 EA
15" & 16" STAINLESS	\$30.00 EA

### Crank Hole Covers

Year	Description	Price
1929-31		\$75.00
1932-34		\$75.00

### Crank Hole Cover & Radiator Shell Medallions

Year	Description	Price
1929-32	ALL EIGHTS, FITS 32 LUGGAGE RACK	\$75.00
1933-39	STANDARD 8	\$75.00
1933-39	SUPER 8	\$75.00
1933-39	TWELVE	\$75.00

\*PRICES SUBJECT TO CHANGE WITHOUT NOTICE.\*



Sylphon Shutter Thermostats

Year	Description	Price
1932-42	SYL 4	\$180.00
OTHER YEARS CAN BE REPAIRED		\$300.00 - \$350.00

Frame End Covers

Year	Description	Price
1932-34	FRONTS	\$60.00
1932-34	REARS	\$60.00
1935-36	FRONTS-RECTANGULAR	\$60.00
1935-36	REARS-OVAL	\$60.00

Shoulder Rivets	PACKAGE OF 20	\$16.00 EA
	10 PACKAGES	\$100.00

Battery Box Cover Screws	\$11.00 EA
--------------------------	------------

Trunk Rack Medallions

Year	Description	Price
FOR ALL 1932 MODELS-OVAL		\$75.00
1933-39	STANDARD 8	\$85.00
1933-39	SUPER 8	\$85.00
1933-39	TWELVES-CHROME & CLOISONNE WITH GOLD CREST	\$140.00
	GOLD & CLOISONNE CREST ONLY	\$45.00

Hood Side Medallions	RED CLOISONNE FOR 1939/40 SUPER 8'S	\$85.00
----------------------	-------------------------------------	---------

Packard Luggage Rack Bumper	\$495.00
-----------------------------	----------

Brake & Clutch Pedal Pads

Year	Description	Price
FOR ALL 1930 UP-BLACK		\$15.00 EA
	ELECTRO CLUTCH 1 BLK, 1 RED	\$16.00

Coil Caps-Black Bakelite

	Description	Price
	8 CYL-NORTHEAST TYPE	\$25.00
	12 CYL-AUTOLITE TYPE	\$25.00

Back Up Lights

Year	Description	Price
1937-40	W/ BRACKETS	\$150.00
1941-42	NO BRACKETS	\$110.00

Gas Caps

Year	Description	Price
1932-39	SENIOR MODELS ONLY	\$75.00

\*PRICES SUBJECT TO CHANGE WITHOUT NOTICE.\*

Perch Bolts-Chrome With Rubber Top Rest

Year	Description	Price
1927-34	6 & 8 CYL	\$105.00 PAIR
1932-34	12 CYL	\$105.00 PAIR

Front Brake Lever Cover Kit-8 Pce For Front Brake Lever To Brake Backing Plate

Year	Description	Price
BALL SOCKET- FITS ALL 1927-32	8 & 12 CYL	\$55.00 SET

Bumper End Caps-Chrome

Year	Description	Price
1934-36	SUPER 8 (ALL) & 12 REARS 2-11/16"	\$25.00
1932-36	TWELVES 3-7/8" DIAM	\$35.00

Engine Enamel-Hi Temp, Hi Gloss \$33.00 QUART (\*\*\*) AVAILABLE IN \$14.00 AEROSOL)

PACKARD GREEN- 1915-47\*\*\*

PACKARD GRAY-SOME 1948-54 (NOT USED ON 1954 359CI ENGINE)

PACKARD BRONZE-1954 359CI & 1956 BIG ENGINES ONLY

PACKARD IVORY- 1955 BIG ENGINE

PACKARD RED- CLIPPER 320 ENGINE

PACKARD TURQUOSE- 1955 CLIPPER W/ 352 ENGINE

Bumperettes-Chrome

Year	Description	Price
FRONTS-MOST 1930-36	SENIORS ONLY	\$50.00
REARS-MOST 1930-36	SENIORS ONLY W/HOLE FOR PERCH BOLT	\$50.00

Horn Parts

	Description	Price
	CHROME HORN COVERS-1932 EXCEPT 900	\$60.00
	CHROME HORN COVERS-1933-34 MODELS	\$60.00

Oil Filter Brackets 6 Pce Set

Year	Description	Price
FOR ALL SENIORS 1928-39	PLAIN STEEL	\$45.00
	ABOVE IN CHROME PLATE	\$60.00

Lenses-All Glass

Year	Description	Price
RUNNING BOARD COURTESY LIGHT LENSE		
1931-39		\$15.00
1932	900 STD 8 TAIL LIGHT LENSE	\$35.00
1932-34	V-12 SUP 8 TAIL LIGHT LENSE	\$35.00
1932-34	V-12 BLUE DOT TAIL LIGHT LENSE	\$70.00

Packard Twelve Muffler Heat Sheild

Year	Description	Price
5 PCE SET FOR ALL 1932-39 MODELS		\$65.00 SET
SOME TRIMMING REQUIRED ON 37-39 MODELS		

\*PRICES SUBJECT TO CHANGE WITHOUT NOTICE.\*



Leather

We stock over 8000 hides and have a huge selection of colors and grains. All our hides are first quality and we can custom dye leather to any color you want. Call us today for samples.

Item #	Description	Price per Square Foot
HS	CONNOLLY STYLE COLORS/GRAIN	\$7.25
HV	PREMIER GERMAN HIDES	\$5.50
00 &DV	BRIDGE OF WEIR	\$8.25
MB	MERCEDES BENZ	\$6.10
M	FINE SCOTTISH AUTOMOTIVE	\$4.75
DL	AMERICAN SUPERSOFT	\$4.95
HG	AMERICAN HIGH GRADE	\$4.75
SP	CLOSEOUT HIDES	\$3.00 - \$3.95
CUSTOM	CUSTOM DYED HIDES (MET. OR PEARLIZED ADDITIONAL)	\$7.25 - \$8.25

All prices are for single hide orders. Half hides available on most leathers. Add 50 cents per square foot for half hide splitting charge. All hidesaverage 45-55 square feet and drum/vat dyed. Most square foot prices decrease with multiple hide orders.

Vinyl

We sell both imported and domestic vinyls. Some are match up vinyls for certain cars and leathers, others are just part of our huge stock and hundreds of colors. We have Jaguar, Mercedes Benz (MB-Tex), Porsche, and old American car vinyls.All vinyl is priced by the yard and can be sold in fractions of that. Send us your swatch to match to, or contact us to request samples for your vinyl needs.

Item #	Description	Width	Price per Yard
AM	JAGUAR EXPANDABLE VINYL	51"	\$42.00
LC	JAGUAR NON EXPANDABLE VINYL	51"	\$42.00
PV	PORSCHE VINYL	54"	\$35.00
VY	CONNOLLY MATCH VINYL	54"	\$30.00
GV	FINE GERMAN VINYL		\$30.00
MBT	MERCEDES BENZ (MB-TEX) Perf and Non-Perf Vinyl 1968 - Present	54" - 60"	\$35.00

Broadcloth

We stock over 50 colors of top quality imported 100 % wool broadcloth. We have 5 groups each with its own weight and width.These are the finest materials available for seat and headliner upholstery today. Call today for color samples or send us in your samples to match to.

Group #	Width	Weight	Price per Yard
Group 2	60"	32 oz.	\$90.00
Group 4	55"	22 oz.	\$90.00
Group 5	60"	22 oz.	\$75.00

\*PRICES SUBJECT TO CHANGE WITHOUT NOTICE.\*

Bedford Cord

We stock many colors of bedford cord ribbed wool cloth. We have 5 groups each with its own weight and width. These are the finest materials available today for seat/door panels etc. Call today for color samples or send us in your samples to match to.

Group #	Width	Weight	Description	Price per Yard
Group 1	62"	28 oz.	Fine Rib	\$85.00
Group 2	60"	28 oz.	Wide Rib	\$85.00
Group 3	60"	28 oz.	Medium Rib	\$85.00
Group 4	60"	28 oz.	Two Tone	\$95.00

Mohair/Wool Velvet

We have many colors of this velvet like seat material. Very soft, both imported and domestic. Both are top quality.The only difference is one is 100 % wool, and the other is a blend. We have over 40 colors to choose from.

Item #	Width	Description	Price per Yard
#21-185	54" WIDE	Imported & Domestic	\$70.00

Specialty Upholstery Fabrics

We also carry specialty fabrics designed for certain cars. These include Packard, Buick and Model T Ford specialty cloths as well as original upholstery fabrics for American Cars.

Description	Width		Price per Yard
PACKARD SHADOW CLOTH	60"	30 OZ. WEIGHT	\$90.00
PACK. PINSTRIPED CLOTH	60"	30 OZ. WEIGHT	\$90.00
MODEL T FABRIC 1922-27	52"	100% WOOL	\$65.00
MERCEDES BENZ VELOUR	60"	100% VELOUR	\$95.00

Upholstery Accessories

Description	Price per Yard
MOQUETTE SNAP ON WINDLACE	\$9.00
RUBBER SPONGE CORE	\$1.00
POLYETHYLENE FOAM WELT CORD	.30¢
ANTIQUE CLOTH WINDLACE	\$6.25
ANTIQUE CLOTH WIREON	\$6.50
ANTIQUE CLOTH EDGEWELT	\$6.00
ANTIQUE COACH LACE	\$6.00

\*PRICES SUBJECT TO CHANGE WITHOUT NOTICE.\*





Headlining Materials

We stock a full line of headlining fabrics for new and old cars. We have patterns to make headliners for some older american cars as well. Check our other listings in this catalog to see if a headliner is available for your car.

Description		Price per Yard
BROADCLOTH	100 % WOOL	\$75.00
MERCEDES BENZ PERFORATED VINYL	54" WIDE	\$19.95 and up
BRUSHED COTTON	54" WIDE	\$30.00
VOLKSWAGEN PERFORATED VINYL	54" WIDE	\$11.95
VOLKSWAGEN PLAIN VINYL	63" WIDE	\$11.95
NEW ROLLS ROYCE STYLE	TAN ONLY	\$70.00
MERCEDES BENZ STRETCH WOOL	TAN & GRAY	\$63.00
PORSCHE VINYL	47-1/2" WIDE	\$35.00
UNION CLOTH	57" WIDE	\$45.00
GULLWING CLOTH	60" WIDE	\$55.00
NEW CORNICHE STYLE	55" & 60"	\$70.00
OTHER MERCEDES BENZ VINYL	54" WIDE	\$25.00
JAGUAR BRUSHED COTTON	GRAY & TAN	\$45.00

Convertible Top Materials

We carry only the finest convertible top material made. We have materials available for most convertible cars. Call us today for samples.

Name	Description	Price per Yard
BRITISH EVERFLEX	50" WIDE FOR ROLLS ROYCE & MORE	\$48.00
HAARTZ VINYL	T/7 BLK. COLONIAL/BLK.	\$19.95
	BLACK COBRA WITH BLK. BACK 54"	\$22.95
STAYFAST	PLAIN BACK/POLYESTER/60"	\$55.00
SONNENDECKE	STAYFAST WITH	
	GERMAN CRISS CROSS BACKING/60"	\$72.00
GERMAN TOP MATERIAL	ORIGINAL GERMAN MERCEDES BENZ/60"	\$120.00
Porsche Levant Grain	LEV-01	\$22.95

Convertible Top Material Accessories

Description	Color	Price per Yard
STAYFAST WIREON	MANY COLORS	\$3.00
STAYFAST BIAS BINDING	MANY COLORS	\$2.00
STAYFAST BOWDRILL	TAN OR BLACK	\$9.50
GERMAN BOWDRILL	TAN OR BLACK	\$30.00

\*PRICES SUBJECT TO CHANGE WITHOUT NOTICE.\*

Hubcaps • Wheel Trim Rings • Hubcap Medallions

All of our hubcaps and trim rings are top quality, handcrafted, and made from the best materials. They are all brand new replacement items and in most cases better than the originals. Due to limited production and high demand, not all the items listed on this page are in stock. All hubcap medallions are sold separately. Call us today for availability. All prices listed are for 1 item, unless otherwise noted.

Packard Hubcaps

1932	900 (SHOVELNOSE LT 8)	\$130.00
1932	STANDARD 8	\$130.00
1932	SUPER 8 / TWIN 6	\$130.00
1933-36	STANDARD 8	\$130.00
1933-36	SUPER 8	\$130.00
1933-36	V-12 FOR WIRE WHEELS (NO MEDALLION)	\$130.00
1935-36	ONE TWENTY	\$130.00
1940-41	110	\$130.00
1937	ONE TWENTY	\$80.00
1937-38	SUPER 8	\$80.00
1937-38	TWELVE (NO MEDALLION)	\$80.00
1937-38	SIX (110)	\$80.00
1938	EIGHT (120)	\$80.00
1939	SIX (110)	\$80.00
1939	EIGHT (120)	\$80.00
1939	SUPER 8	\$80.00
1939	TWELVE(NO MEDALLION)	\$80.00
1940-41	120	\$80.00
1940-41	160	\$80.00
1940-41	180 (NO MEDALLION)	\$80.00
1946/50	STANDARD & SUPER	\$145.00
1946/50	CUSTOM 8 (NO MEDALLION)	\$145.00
1953/56	CARIBBEAN FOR WIRE WHEELS	\$55.00

Wheel Trim Rings  
(Chrome over Brass)

15" Fits All 15" Wheels	
16" Fits Most Makes	
16" Ribbed for 1940-46 Ford/Merc.	
17" Fits Most Makes (Large & Small Cutout)	\$60.00

Wheel Trim Rings (Stainless Steel)	
15" Fits Most Cars	
16" Fits Most Cars	\$30.00

\*PRICES SUBJECT TO CHANGE WITHOUT NOTICE.\*

Packard Hubcap Medallions

1933-39	12 CHROME AND CLOISONNE (RED)	\$125.00
1933-39	12 CHROME AND CLOISONNE (GREEN)	\$160.00
1940-41	180 CHROME AND CLOISONNE	\$125.00
1946-50	CUSTOM 5" DIAMETER CHROME AND CLOISONNE	\$135.00

Chevrolet Hubcaps

1930-32		\$65.00
1933 MASTER		\$65.00
1934 MASTER		\$85.00
1937-38		\$75.00
1940		\$65.00

Cadillac Hubcaps

1939-40	Model 60, 62	\$200.00
1939-40	Model 75	\$200.00
1941-46	15"	\$200.00
1941-49	SMALL DIAMETER	\$75.00
1939-40	V 16	\$200.00
1941	16"	\$200.00
1947	15" SOMBRERO	\$200.00
1948-52	15" SOMBRERO	\$200.00
1947-49	16" SOMBRERO	\$350.00
1953-58	SABRE	\$75.00
1939-40	LASALLE	\$200.00

Cadillac Hubcap Medallions

1937-38	Black & Brass	\$47.00
1939-40	Red & Brass	\$47.00
1941-53	Red & Brass	\$47.00

Ford Spyder Hubcaps

1936	Polished Stainless Steel	\$165.00
1937	Polished Stainless Steel	\$165.00
1933-39	Polished Stainless Steel	\$165.00





Misc. Products

Happich Simichrome Polish

Long recognized as the premier metal polish in the world. Shines and brightens all metals including chrome, brass, bronze, silver and gold. This creamy soft polish comes in a squeezable tube. Great for automotive use and polishing jewelry.

HSP-1 (5 Gram Tube) \$9.95

Universal Solid State Electric Fuel Pump

New Universal Solid State E8012S Series Electric Fuel Pump features advanced technology. Exclusive design provides increased vapor handling capacity. Solid State engineering has no electrical contact points to wear out and is highly resistant to voltage spikes, even reversed polarity. Permanently sealed construction with no screws to loosen or leak. Impervious to corrosion from alcohol blended fuels. Has a flow rate of 30 GPH and pressure range of 4 to 6.5 psi. For 6 volt application. American and foreign cars.

FP-8011 \$85.00



Misc. European / Japanese Car Convertible Tops

We carry a full line of foreign car convertible tops. We feature Porsche, BMW, Saab & Volkswagen, Jaguar, Suzuki, Jeep, Toyota, Honda, M.G., Audi, and many more. Tops are available for almost all cars. All tops are made to original factory specifications and guaranteed to fit. We have all the original colors and some special colors available. Call us today for a price on the top you need.

See our website: [www.cabrioworld.com](http://www.cabrioworld.com)



ZDDPlus

After 70+ years, the EPA mandated that all domestic oil producers remove ZDDP (Zinc Dialkyl Dithio Phosphate) from all conventional and synthetic motor oil. If your engine was designed before 1989 the non-roller lifters require ZDDP to avoid premature deterioration. ZDDP also alters bearing and journal surface characteristics to prevent metal to metal contact. Under extreme conditions like a high performance motor, ZDDP reduces the tendency of parts to scuff or gall under heavy loads. Simply add ZDDP-Plus to every 4-5 quart oil change and your motor will be protected from the metal to metal contact. Add one 4 ounce bottle to a 4-5 quart oil change modifier to eliminate and metal-to-metal contact. Applicable with all grades of conventional and synthetic motor oils. Add at time of oil change. Can be added at any time but best time is at oil change. Should only be used in motor produced in 1989 and older. Not for use in diesel motors. Not for use with OBD controlled motors.

ZDDP \$9.50 EA., buy 3 for \$9.00 EA., buy 10 for \$8.75 EA.

\*PRICES SUBJECT TO CHANGE WITHOUT NOTICE.\*

Halogen Bulbs

6 and 12 Volt for automobiles and motorcycles.  
Improve visibility and safety!

Whether you'd like to see the road and your instrument cluster at night or want to be sure that cars behind you can see you applying your brakes during the day, **halogen lights are a must for drivers who take safety seriously.** Our halogen bulbs fit directly into your original sockets so that no complicated, expensive, and troublesome modifications are needed in order for you to get more light from your antique automobile or motorcycle. Upgrading to halogen lights is as simple as removing your old bulb and putting a Hirsch halogen in its place.

Key Features of Hirsch Halogens are as follows:

- Improve visibility and safety, night and day
- Get roughly twice the light of conventional bulbs
- Easy installation with simple instructions included
- Fit original sockets with no modifications
- Won't alter appearance
- Virtually no added current drain
- Quartz glass for long life
- 6 and 12 volt
- Most sizes and specifications available:
  - ♦ Headlights, Sealed Beams, Tripper, Stop, Tail, Directionals, Courtesy, Running, Instruments, Dome and Accessory Lights

Sealed Beam \$45.00  
(includes replaceable bulb)

Other Headlamp Bulbs \$27.00

Stop, Tail, Instrument, Others \$17.00

