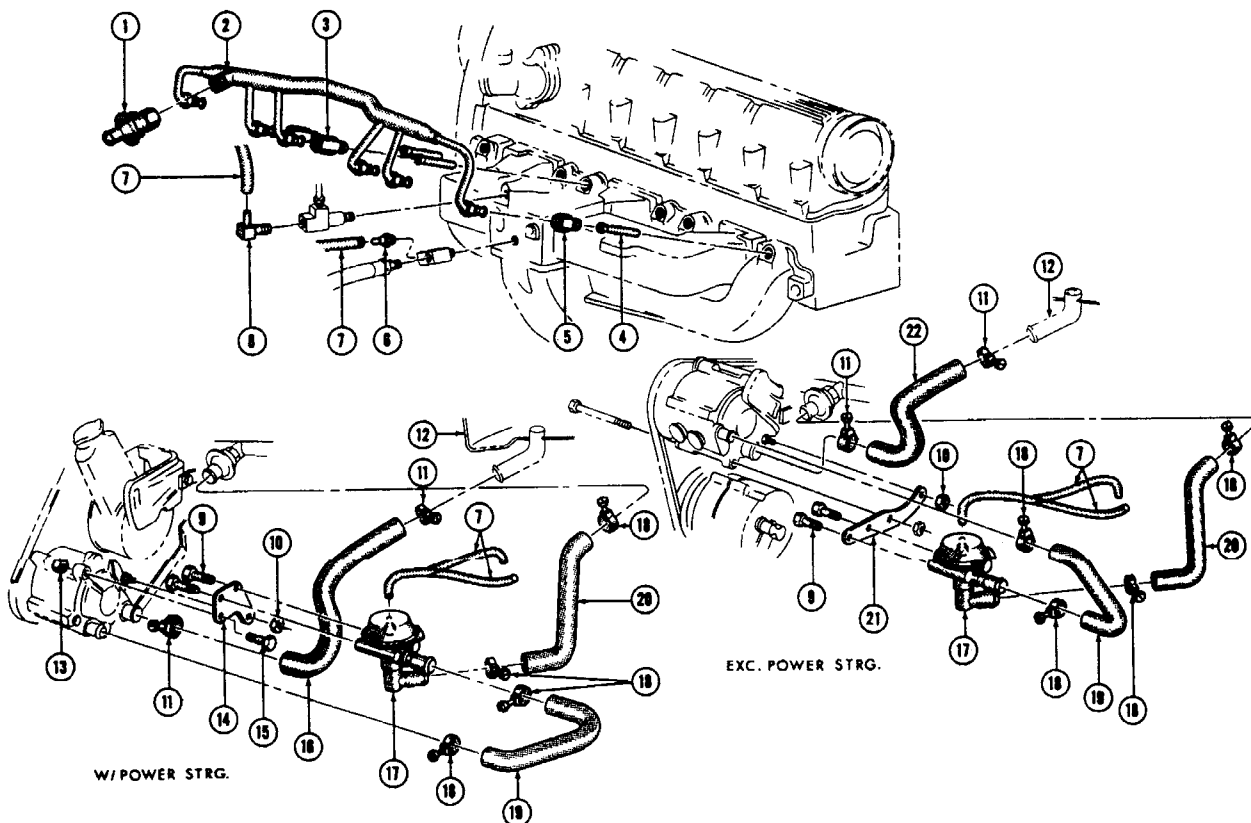


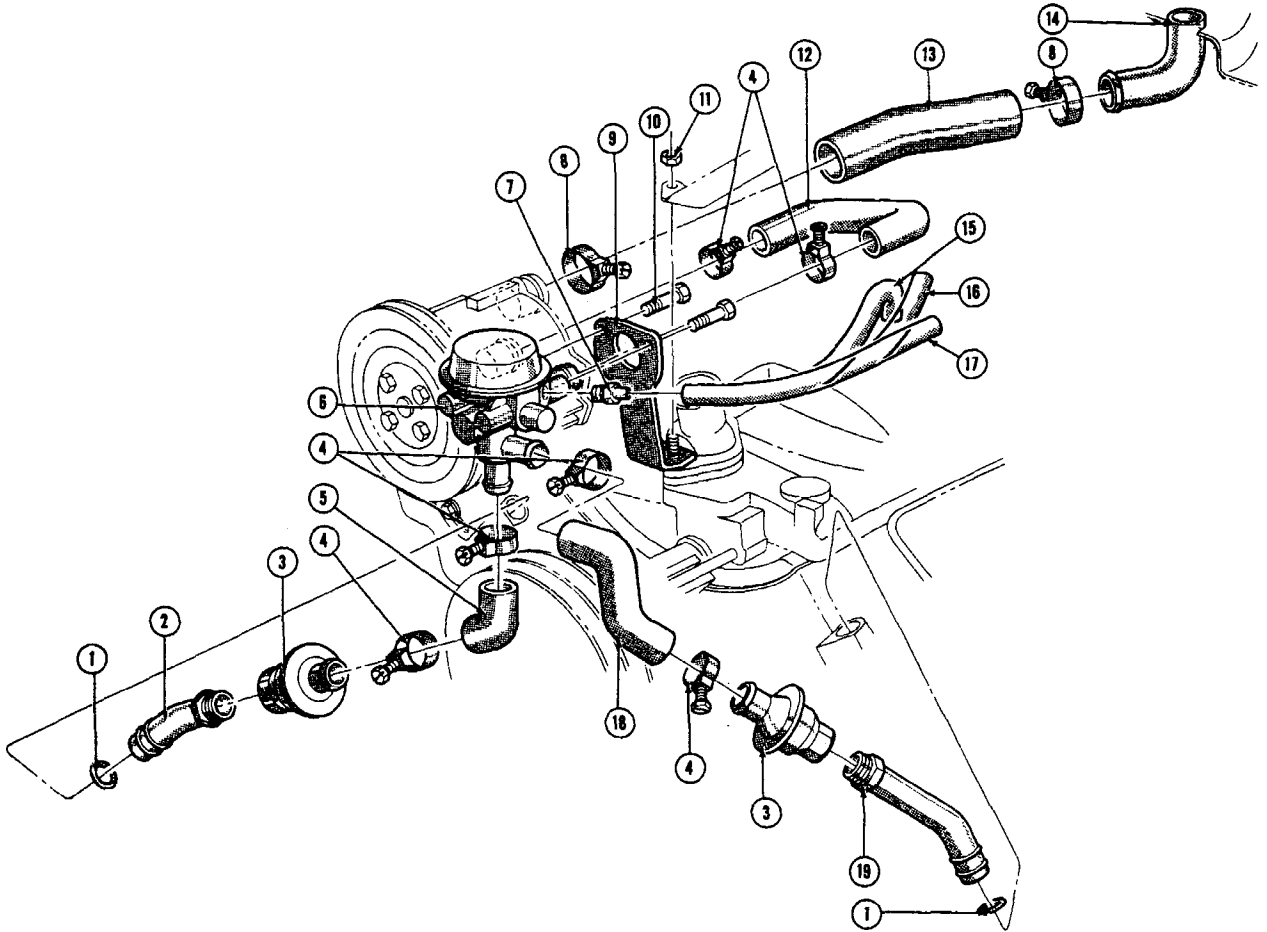
**1967 FIREBIRD O.H.C. 6 CYL. ENGINE AIR INJECTION  
 PUMP MOUNTING—W/POWER STEERING**

<u>Key</u>	<u>Part Name</u>	<u>Group No.</u>
1	BOLT, Air Pump to Supports (3/8"-16 x 5 1/8")	8.900
2	BOLT, Pulley to Air Pump (5/16" - 24 x 1/2")	8.900
3	PULLEY, Air Pump	3.650
4	NUT, Steering Pump Pulley	6.655
5	NUT, Air Pump Support Bolt (3/8"-16 Hex. Lock)	8.915
6	WASHER, Steering Pump Pulley	6.655
7	SPACER, Air Pump Front to Rear Support	3.655
8	PULLEY, Steering Pump	6.655
9	CLIP, Wire Harness to Head	N.S.
10	BOLT, Air Pump Rear Support to Head (3/8"-16 x 7/8")	8.900
11	SUPPORT, Air Pump - Rear	3.655
12	SPACER, Pump Bracket to Rear Support (13/32" x 1" x 5/16")	3.655
13	WASHER, Pump to Mtg. Brkt. (13/32" x 3/4" x 1/8")	2.277
14	PLUG, Air Pump Pressure Set	3.665
15	PUMP ASM., Air	3.660
16	SPACER, Air Pump Frt. Support to Strg. Pump Support	3.655
17	SUPPORT, Air Pump - Front	3.655
18	BOLT, Air Pump Support to Strg. Pump Support (3/8" - 16 x 1 1/4")	8.900
19	BOLT, Air Pump to Support (3/8"-16 x 1 3/4")	8.900
20	BOLT, Air Pump to Support (3/8"-16 x 4 3/4")	8.900
21	BOLT, Air Pump Frt. Support to Bracket (3/8"-16 x 3 3/4")	8.900



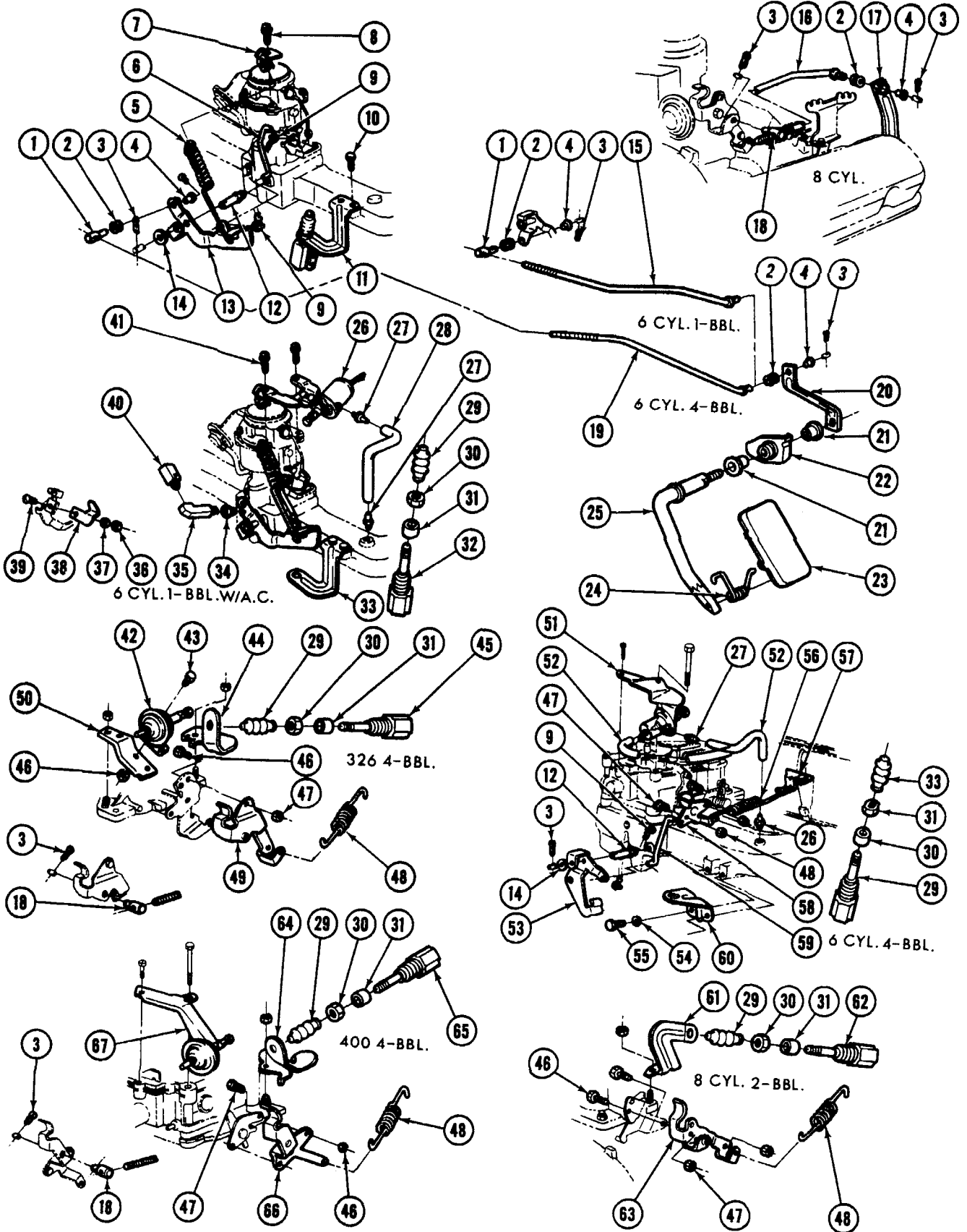
## 1967 O.H.C. 6 CYL. ENGINE AIR INJECTION SYSTEM

Key	Part Name	Group No.
1	VALVE ASM., Air Injection Check - Single Inlet	3.670
2	TUBE ASM., Air Injection	3.675
3	FITTING, Air Injection Tube - Long (2 Req'd.)	3.680
4	TUBE, Air Injection Extension	3.675
5	FITTING, Air Injection Tube - Short (4 Req'd.)	3.680
6	FITTING, Air Injection Diverter Valve Vac. Hose	3.675
7	HOSE, Air Diverter Valve Vacuum (3/16" I.D. x 15-1/2")	3.440
8	ELBOW, Air Diverter Valve Vacuum Hose	3.680
9	BOLT, Air Diverter Valve to Brkt. (1/4"-20 x 7/8" 280M)	8.900
10	NUT, Air Diverter Valve, Brkt. to Pump (5/16"-18 lock)	8.917
11	CLAMP, Inlet or Outlet Hose (1-1/8" to 1-7/16")	1.166
12	CLEANER & SILENCER, Carburetor Air	3.402
13	NUT, Air Diverter Valve Brkt. to Pump (3/8"-16 lock)	8.917
14	BRACKET, Air Diverter Valve Mtg. (w/Power Strg.)	3.672
15	BOLT, Air Diverter Valve Brkt. to Pump (3/8"-16 x 1-1/2" 280M)	8.900
16	HOSE, Air Injection Pump Inlet (w/Power Strg.)	3.675
17	VALVE ASM., Intake Air Diverter	3.670
18	CLAMP, Inlet or Outlet Hose (7/8" to 1-1/8")	1.166
19	HOSE, Pump Outlet to Air Diverter Valve	3.675
20	HOSE, Air Diverter Valve to Check Valve	3.675
21	BRACKET, Air Diverter Valve Mtg. (w/Std. Strg.)	3.672
22	HOSE, Air Injection Pump Inlet (w/Std. Strg.)	3.675



**1967 EIGHT CYLINDER ENGINES AIR INJECTION SYSTEM**

Key	Part Name	Group No.
1	SEAL, Outlet Pipe to Bracket "O" Ring	3.675
2	PIPE ASM., Injection Diverter Outlet - R.H.	3.675
3	VALVE ASM., Air Injection Check (Single Inlet)	3.670
4	CLAMP, Air Hose (1-1/8" to 7/16")	1.166
5	HOSE, Diverter Valve to Check Valve - R.H.	3.675
6	VALVE ASM., Intake Air Diverter	3.670
7	FITTING, Air Diverter Valve	3.675
8	CLAMP, Air Hose (1-3/16" to 7/8")	1.166
9	BRACKET, Air Diverter Valve	3.672
10	BOLT, Diverter Valve to Bracket (1/4"-20 x 7/8")	8.900
11	NUT, Diverter Valve Bracket to Outlet Fitting (3/8"-16)	8.915
12	HOSE, Outlet Hose to Diverter Valve	3.675
13	HOSE, Air Inlet	3.675
14	CLEANER & SILENCER, Carburetor Air	3.402
15	HOSE, Carb. to Valve (14-3/4" Long) - 2 Bbl. Carb. (Cut to Length)	3.675
16	HOSE, Carb. to Valve (11-1/2" Long) - 4 Bbl. G.T.O. & 428 Eng. (Cut to Length)	3.675
17	HOSE, Carb. to Valve (12-1/2" Long) - 4 Bbl. 326 & 400 Eng. (1/4" I.D.)	8.962
18	HOSE, Diverter Valve to Check Valve - L.H.	3.675
19	PIPE ASM., Injection Diverter Outlet - L.H.	3.675



1967 FIREBIRD ACCELERATOR LINKAGE

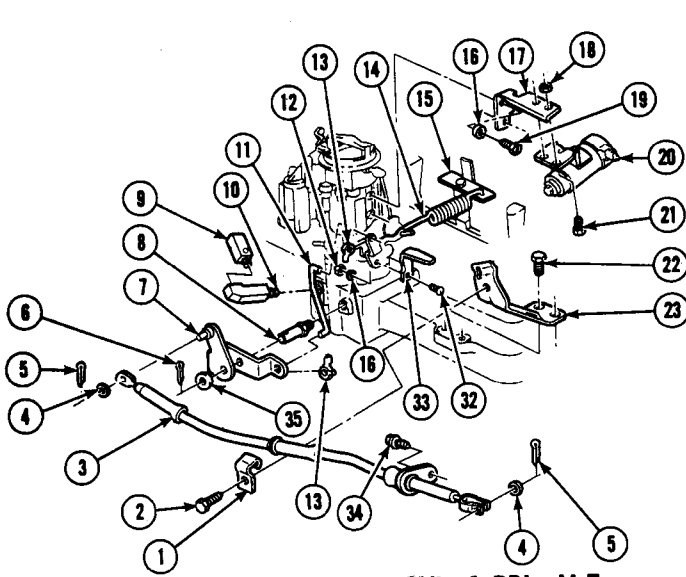


# FIREBIRD

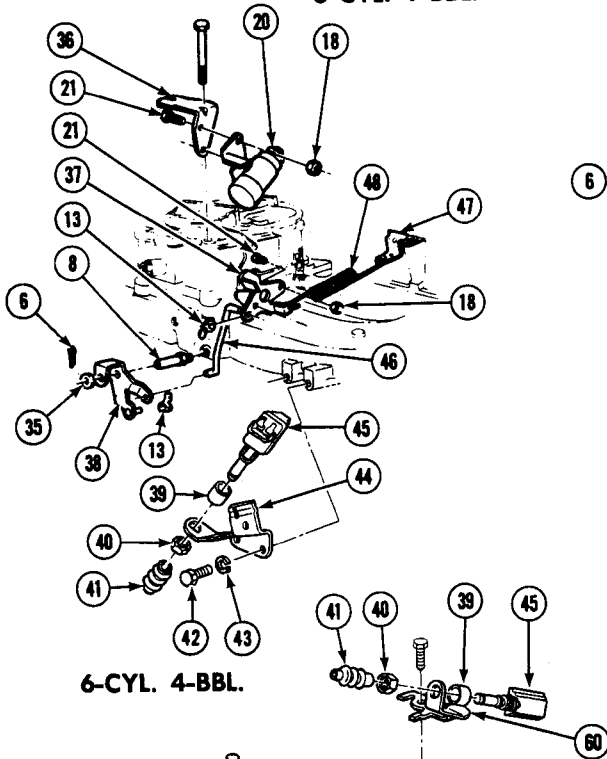
## PARTS CATALOGUE

Key	Part Name	Group No.
1	SWIVEL, Accelerator Control Rod . . . . .	3.425
2	BUSHING, Accelerator Control Rod to Lever . . . . .	3.431
3	PIN, Throttle Control Idler Lever to Mtg. Stud (3/32" x 3/4") . . . . .	3.425
4	SLEEVE, Accelerator Control Rod to Lever . . . . .	3.463
5	SPRING, Throttle Control Return (w/1 B.C.) . . . . .	3.459
6	ROD, Carb. to Accelerator Control Lever (w/1 B.C.) . . . . .	3.430
7	BRACKET, Accelerator Pull-Back Spring (w/1 B.C. Exc A.C.) . . . . .	3.459
8	SCREW & LOCKWASHER, Bracket to Carb. (#12-28 x 15/16") . . . . .	8.977
9	CLIP, Control Lever Rod to Control Lever . . . . .	3.425
10	BOLT, Downshift Mtg. Bracket to Intake Manifold (5/16"-18 x 5/8") . . . . .	8.900
11	BRACKET, Downshift Switch Mtg. (6 Cyl. A.T. - 1 B.C.) . . . . .	4.057
12	STUD, Accelerator Control Idler Lever . . . . .	3.456
13	LEVER, Throttle Control Idler . . . . .	3.463
14	WASHER, Throttle Control Idler Lever to Mtg. Stud (3/8 x 3/4) . . . . .	8.929
15	ROD, Throttle Control Idler (w/4 B.C.) . . . . .	3.430
16	ROD, Accelerator Control Lever to Carb. (8 Cyl. exc. 326 4 B.C.) . . . . .	3.430
17	LEVER, Accelerator Control Rod . . . . .	3.454
18	SWIVEL, Accelerator Control Rod . . . . .	3.425
19	ROD, Idler Lever to Accelerator Control Lever (w/1 B.C.) . . . . .	3.430
20	LEVER, Accelerator Control Rod . . . . .	3.454
21	BUSHING, Accelerator Pedal Rod . . . . .	3.431
22	SUPPORT, Accelerator Pedal Rod . . . . .	3.431
23	PEDAL, Accelerator . . . . .	3.431
24	SPRING, Accelerator Tension to Control Rod . . . . .	3.459
25	ROD, Accelerator Pedal Control . . . . .	3.431
26	SWITCH, Idle Speed-Up Control (6 Cyl. w/A.C.) . . . . .	3.440
27	FITTING, Throttle Control Switch to Vacuum Hose . . . . .	3.440
28	HOSE, Idle Control Switch to Intake Manifold . . . . .	3.440
29	BOOT, Downshift Switch . . . . .	4.057
30	NUT, Switch to Bracket . . . . .	4.057
31	SPACER, Downshift Switch Mounting . . . . .	4.057
32	SWITCH, Downshift Control . . . . .	4.057
33	BRACKET, Downshift Switch Mtg. . . . .	4.057
34	REDUCER, Throttle Idler Lever to Compensator Elbow (3/8" x 1/8") . . . . .	N.S.
35	ELBOW, Hot Idle Compensator . . . . .	3.820
36	NUT, Throttle Lever to Extension (#10-24) . . . . .	8.915
37	LOCKWASHER, Throttle Lever to Extension (#10) . . . . .	8.931
38	EXTENSION, Throttle Lever (w/A. C. 1 B.C.) . . . . .	3.454
39	SCREW, Throttle Lever to Extension (#10-24 x 1/2") . . . . .	8.977
40	COMPENSATOR, Hot Idle (6 Cyl. A.C. - 1 B.C.) . . . . .	3.820
41	SCREW & LOCKWASHER, Idle Cont. Switch to Carb. (#12-28 x 15/16") . . . . .	N.S.
42	DIAPHRAGM ASM., Throttle Return . . . . .	3.440
43	BOLT, Diaphragm to Bracket (1/4"-20 x 1/2") . . . . .	8.900
44	BRACKET, Downshift Switch Mtg. . . . .	4.057
45	SWITCH, Downshift Control . . . . .	4.057
46	NUT, Carb. Lever Extension to Lever (1/4"-20) . . . . .	8.917
47	BOLT, Carb. Lever Extension to Lever (1/4"-20 x 1/2") . . . . .	8.900
48	SPRING, Throttle Control Return (Exc. Cruise Control) . . . . .	3.459
49	EXTENSION, Carb. Lever (8 Cyl. 326 4 B.C.) . . . . .	3.454
50	BRACKET, Vac. Diaphragm & Vapor Diverter Mtg. (8 Cyl. 326 A.T. - 4 B.C.) . . . . .	3.440
51	SWITCH & BRACKET, Idle Speed Up Control (w/A.C.) . . . . .	3.440
52	HOSE, Idle Control Switch to Intake Manifold . . . . .	3.440
53	LEVER, Throttle Control Idler (6 Cyl. S.T. - 4 B.C.) . . . . .	3.463
54	LOCKWASHER, Downshift Switch Mtg. Bracket to Intake Manifold (5/16") . . . . .	8.931
55	BOLT, Downshift Switch Mtg. Bracket to Intake Manif. (5/16"-18 x 3/4") . . . . .	8.900
56	SPRING, Throttle Control Return (6 Cyl. 4 B.C.) . . . . .	3.459
57	ANCHOR, Throttle Control Return Spring (6 Cyl. 4 B.C.) . . . . .	3.459
58	EXTENSION, Carb. Lever (6 Cyl. 4 B.C.) . . . . .	3.454
59	ROD, Carb. to Idler Lever (6 Cyl. 4 B.C.) . . . . .	3.430
60	BRACKET, Downshift Switch Mtg. (6 Cyl. A.T. 4 B.C.) . . . . .	4.057
61	BRACKET, Downshift Switch Mtg. . . . .	4.057
62	SWITCH, Downshift Control . . . . .	4.057
63	EXTENSION, Carb. Lever (8 Cyl. 326 2 B.C.) . . . . .	3.454
64	BRACKET, Downshift Switch Mtg. . . . .	4.057
65	SWITCH, Downshift Control . . . . .	4.057
66	EXTENSION, Carb. Lever (6 Cyl. 400 4 B.C.) . . . . .	3.454
67	DIAPHRAGM, Throttle Return . . . . .	3.440

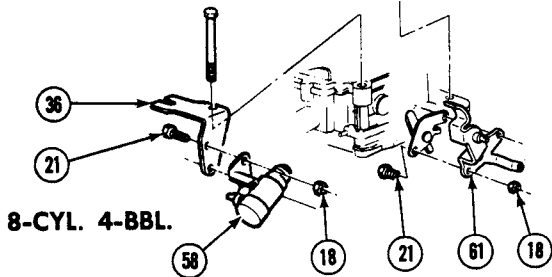
### 1967 FIREBIRD ACCELERATOR LINKAGE



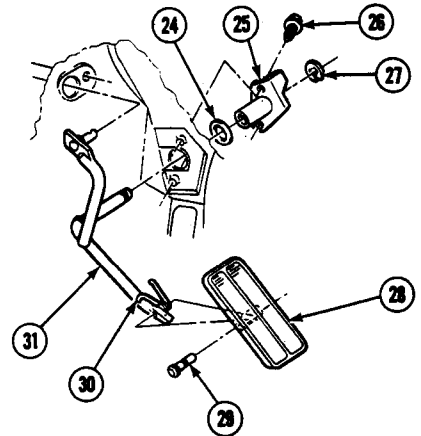
6-CYL. 1-BBL. M.T.



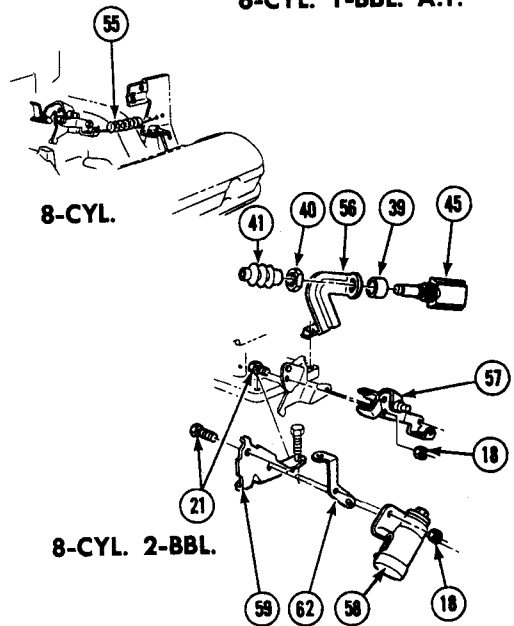
6-CYL. 4-BBL.



8-CYL. 4-BBL.



6-CYL. 1-BBL. A.T.



8-CYL.

8-CYL. 2-BBL.

## 1968 FIREBIRD ACCELERATOR LINKAGE

<b>GM</b>	<b>FIREBIRD</b>
	<b>PARTS CATALOGUE</b>

Key	Part Name	Group No.
1	CLAMP, Throttle Control Cable Ret. . . . .	3.425
2	SCREW, Throttle Control Cable Bracket Clamp (1/4"-20 x 5/8") . . . .	8.977
3	CABLE ASM., Throttle Control . . . . .	3.430
4	WASHER, Throttle Control Cable to Control Lever (13/64" x 13/32" x 3/64") . . . . .	N.S.
5	COTTER PIN, Throttle Control Cable to Control Lever (1/16" x 1/2") . . . .	8.938
6	COTTER PIN, Throttle Control Idler Lever to Control Lever (3/32" x 3/4") . . . . .	8.938
7	LEVER ASM., Throttle Control Idler (6-Cyl. 1-Bbl. M.T.) . . . . .	3.463
8	STUD, Accelerator Control Idler Lever . . . . .	3.456
9	COMPENSATOR ASM., Carb. Hot Idle . . . . .	3.820
10	ELBOW, Carb. Hot Idle Compensator . . . . .	3.820
11	ROD, Carb. to Accelerator Control Lever (6-Cyl.) . . . . .	3.430
12	NUT, Carb. Throttle Lever Ext. to Throttle Lever (#10-24) . . . . .	8.915
13	CLIP, Carb. to Accelerator Cont. Lever Rod Lower . . . . .	3.425
14	SPRING, Throttle Control Return (6-Cyl. 1-Bbl. M.T.) . . . . .	3.459
15	ANCHOR, Throttle Control Return Spring (6-Cyl. 1-Bbl.) . . . . .	3.459
16	LOCK WASHER, Carb. Throttle Lever Ext. Bolt (#10 Med.) . . . . .	8.931
17	BRACKET, Idle Stop Solenoid Mtg. (6-Cyl. 1-Bbl. M.T.) . . . . .	3.444
18	NUT, Idle Stop Solenoid to Mtg. Bracket (1/4"-20) . . . . .	8.915
19	SCREW, Idle Stop Solenoid Bracket to Carb. (#10-32 x 3/8") . . . . .	N.S.
20	SOLENOID, Idle Stop (6-Cyl.) . . . . .	3.440
21	BOLT, Idle Stop Solenoid to Mtg. Bracket (1/4"-20 x 1/2") . . . . .	8.900
22	BOLT, Throttle Control Cable Mtg. Bracket (5/16"-18 x 5/8") . . . . .	8.900
23	BRACKET, Throttle Control Cable Mtg. (6-Cyl. 1-Bbl.) . . . . .	3.459
24	GASKET, Throttle Control Lever to Dash . . . . .	3.431
25	SUPPORT, Accelerator Pedal Rod . . . . .	3.431
26	SCREW, Support to Dash (1/4"-14 x 3/4") . . . . .	N.S.
27	RETAINER, Pedal Rod to Support & Dash (5/16" Ring) . . . . .	8.934
28	PEDAL ASM., Accelerator . . . . .	3.451
29	PIN, Accelerator Pedal Rod Clevis . . . . .	3.452
30	SPRING, Accelerator Pedal Tension to Control Rod . . . . .	3.459
31	ROD ASM., Accelerator Pedal . . . . .	3.431
32	SCREW, Carb. Throttle Lever Ext. to Throttle Lever (#10-24 x 1/2") . . . .	8.977
33	EXTENSION, Carb. Throttle Lever (6-Cyl. 1-Bbl. M.T.) . . . . .	3.454
34	SCREW, Throttle Control Cable to Dash (1/4"-14 x 3/4") . . . . .	N.S.
35	WASHER, Throttle Control Idler Lever (25/64" I.D. x 3/4" O.D.) . . . .	3.463
36	BRACKET, Idle Stop Solenoid Mtg. (6-Cyl. 4-Bbl. & 8-Cyl. 4-Bbl.) . . . .	N.S.
37	EXTENSION, Carb. Lever (6-Cyl. 4-Bbl.) . . . . .	3.454
38	LEVER ASM., Throttle Control Idler (6-Cyl. 4-Bbl.) . . . . .	3.463
39	SPACER, Downshift Switch Mtg. . . . .	4.057
40	NUT, Downshift Switch & Spacer to Bracket . . . . .	4.057
41	BOOT, Downshift Switch . . . . .	4.057
42	BOLT, Control Cable Mtg. Bracket (5/16"-18 x 3/4") . . . . .	8.900
43	LOCK WASHER, Control Cable Mtg. Bracket Screw (5/16" Std.) . . . . .	8.931
44	BRACKET, Downshift Switch Mounting (6-Cyl. 4-Bbl.) . . . . .	4.057
45	SWITCH ASM., Downshift Control . . . . .	4.057
46	ROD, Carb. to Idler Lever (6-Cyl. 4-Bbl.) . . . . .	3.430
47	ANCHOR, Throttle Control Return Spring (6-Cyl. 4-Bbl.) . . . . .	3.459
48	SPRING, Throttle Control Return (6-Cyl. 4-Bbl.) . . . . .	3.459
49	LEVER ASM., Throttle Control Idler (6-Cyl. 1-Bbl. A.T.) . . . . .	3.463
50	SPRING, Throttle Control Return (6-Cyl. 1-Bbl. A.T.) . . . . .	3.459
51	SCREW, Bracket to Carb. (#12-28 x 15/16") . . . . .	N.S.
52	BRACKET, Idle Speed-Up Control Mtg. (6-Cyl. 1-Bbl. A.T.) . . . . .	3.444
53	EXTENSION, Carb. Throttle Lever (6-Cyl. 1-Bbl.) . . . . .	3.454
54	BRACKET, Downshift Switch Mtg. (6-Cyl. 1-Bbl. A.T.) . . . . .	4.057
55	SPRING, Throttle Control Return (8-Cyl.) . . . . .	3.459
56	BRACKET, Downshift Switch Mtg. (8-Cyl. 2-Bbl.) . . . . .	4.057
57	EXTENSION ASM., Carb. Lever (8-Cyl. 2-Bbl.) . . . . .	3.454
58	SOLENOID ASM., Idle Stop (8-Cyl.) . . . . .	3.440
59	BRACKET, Idle Stop Solenoid Mounting (8-Cyl. 2-Bbl.) . . . . .	3.444
60	BRACKET, Downshift Switch Mtg. (8-Cyl. 4-Bbl.) . . . . .	4.057
61	EXTENSION ASM., Carb. Lever (8-Cyl. 4-Bbl.) . . . . .	3.454
62	EXTENSION, Solenoid Mounting Bracket to Carb. (8-Cyl. 2-Bbl.) . . . .	3.444

**1968 FIREBIRD ACCELERATOR LINKAGE**





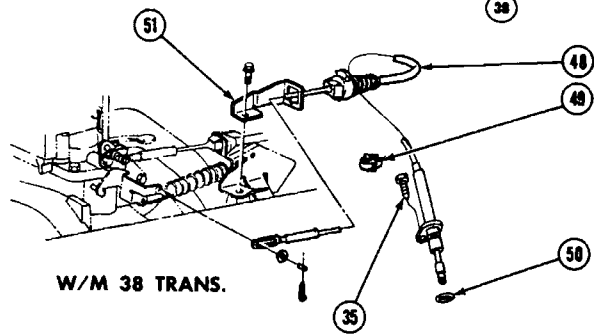
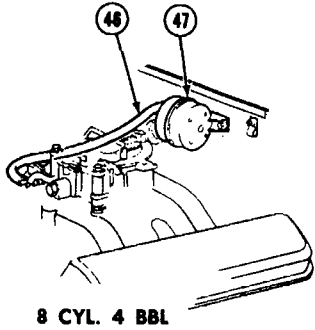
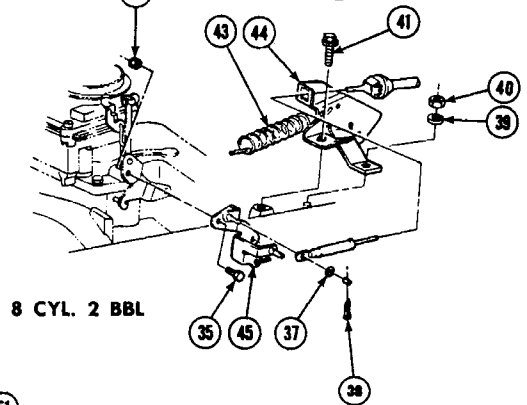
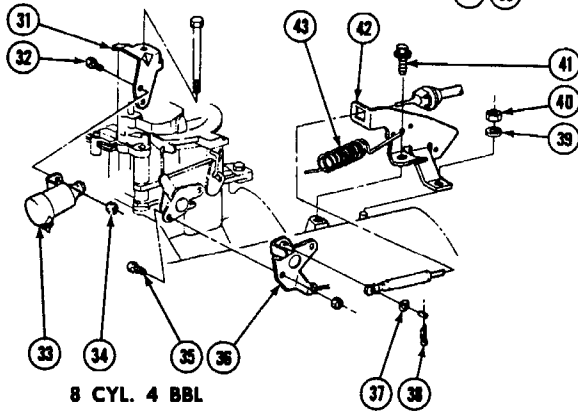
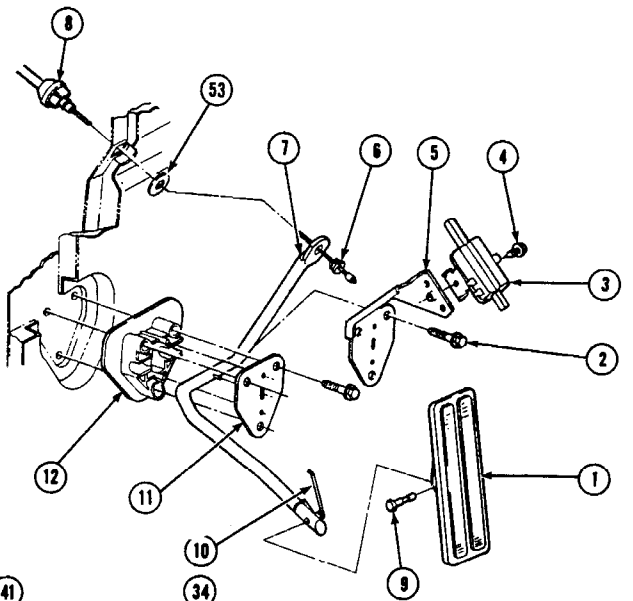
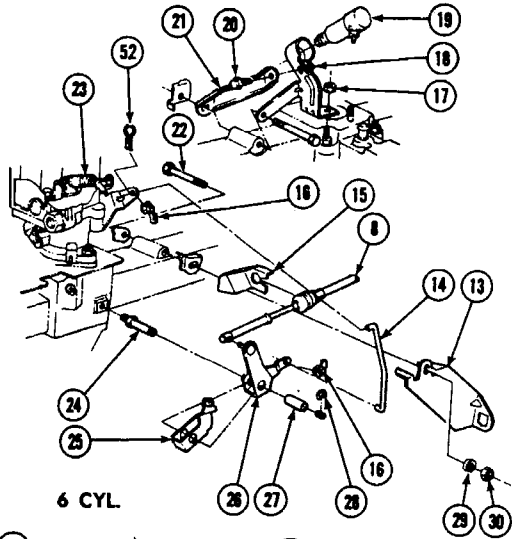


# FIREBIRD

## PARTS CATALOGUE

Key	Part Name	Group No.
1	NUT, Carb. Throttle Lever Ext. to Throttle Lever (#10-24).	8.915
2	LOCK WASHER, Carb. Throttle Lever Ext. Bolt (#10 Med.).	8.931
3	CLIP, Carb. to Accelerator Control Lever Rod Lower	3.425
4	SPRING, Throttle Control Return (6-Cyl. 1-Bbl.).	3.459
5	ANCHOR, Throttle Control Return Spring (6 Cyl. 1-Bbl.)	3.459
6	BRACKET, Idle Stop Solenoid Mtg. (6 Cyl. 1-Bbl. M.T.)	3.444
7	BOLT, Idle Stop Solenoid Mtg. Bracket (1/4"-20 x 5/8")	8.900
8	SCREW, Idle Stop Solenoid Bracket to Carb. (#10-24 x 3/8")	N.S.
9	SOLENOID, Idle Stop.	3.440
10	NUT, Idle Stop Solenoid to Mtg. Bracket (1/4"-20)	8.915
11	BOLT, Throttle Cable Control Mtg. Bracket (5/16"-18 x 5/8")	8.900
12	BRACKET, Throttle Control Cable Mtg. (6 Cyl. 1 Bbl.)	3.459
13	BRACKET, Downshift Cable Mtg. (w/M-38 Trans.)	4.060
14	CABLE ASM., Downshift Control (w/M-38 Trans.)	4.057
15	CLAMP, Throttle Control Cable Ret.	3.425
16	SCREW, Throttle Control Cable Bracket Clamp (1/4" 20 x 5/8" Hex.)	8.900
17	SCREW, Carb. Throttle Lever Ext. to Carb. (#10-24 x 1/2" Hex.)	8.900
18	EXTENSION, Carb. Throttle Lever (6 Cyl. 1 Bbl. M.T.)	3.454
19	LEVER, Downshift Cable Throttle Control (w/M-38 Trans.)	4.060
20	INSERT, Downshift Control Lever (w/M-38 Trans.)	3.454
21	WASHER, Downshift Cable to Lever (1/8" x 1/2" x 1/32")	N.S.
22	RETAINER, Downshift Cable to Throttle Lever.	4.057
23	WASHER, Throttle Control Idler Lever (25/64" I.D. x 3/4" O.D.)	3.463
24	COTTER PIN, Throttle Control Idler Lever to Control Lever (3/32" x 3/4")	8.938
25	LEVER & PIN ASM., Throttle Control Idler (6 Cyl. 1 Bbl. M.T.)	3.463
26	COTTER PIN, Throttle Control Cable to Control Lever (1/16" x 1/2")	8.938
27	WASHER, Throttle Control Cable to Control Lever (13/64" x 13/32" x 3/64")	N.S.
28	STUD, Accelerator Control Idler Lever	3.430
29	ROD, Carb. to Accelerator Control Lever (6 Cyl.)	3.430
30	CABLE ASM., Throttle Control	3.430
31	SCREW ASM., Throttle Control Cable to Dash (1/4"-14 x 3/4")	8.977
32	GASKET, Throttle Control Lever to Dash.	3.431
33	SUPPORT, Accelerator Pedal Rod.	3.431
34	RETAINER, Pedal Rod to Support & Dash (5/16")	8.934
35	PLATE, Accelerator Trim	3.451
36	PEDAL ASM., Accelerator	3.451
37	PIN, Accelerator Pedal Rod Clevis	3.452
38	SPRING, Accelerator Pedal Tension to Control Rod	3.459
39	ROD ASM., Accelerator Pedal	3.454
40	CLIP, Trans. Downshift Cable to Rocker Arm Cover	4.057
41	SEAL, Downshift Cable to Trans. ("O" Ring).	4.057
42	BOLT, Downshift Cable to Trans. Case - Attach. (1/4"-20 x 1/2")	8.900
43	LEVER ASM., Throttle Control Idler (6 Cyl. 1 Bbl. A.T.)	3.463
44	NUT, Downshift Switch & Spacer to Bracket	4.057
45	BOOT, Downshift Switch.	4.057
46	BRACKET, Downshift Switch Mtg. (6 Cyl. 1 Bbl. A.T.)	4.057
47	SPACER, Downshift Switch Mtg.	4.057
48	SWITCH ASM., Downshift Control	4.057
49	ANCHOR, Throttle Control Return Spring (6 Cyl. 4 Bbl.)	3.459
50	SPRING, Throttle Control Return (6 Cyl. 4 Bbl.)	3.459
51	ROD, Carb. to Idler Lever (6 Cyl. 4 Bbl.)	3.430
52	BRACKET, Downshift Cable to Manifold (6 Cyl. 4 Bbl.)	4.060
53	LOCK WASHER, Control Cable Mtg. Brkt. Bolt (5/16" Std.)	8.931
54	BOLT, Control Cable Mtg. Bracket to Manifold (5/16" x 18 x 3/4")	8.900
55	LEVER, Downshift Cable Throttle Control.	4.060
56	LEVER, Throttle Control Idler (6 Cyl. 4 Bbl. M.T.)	3.463
57	EXTENSION, Carb. Lever (6 Cyl. 4 Bbl.)	3.454
58	BRACKET, Idle Stop Solenoid Mtg. (6 Cyl. 4 Bbl. 8 Cyl. 4 Bbl.)	3.444
59	BRACKET, Downshift Switch Mounting (8 Cyl. 4 Bbl.)	4.057
60	BRACKET, Downshift Cable Mtg. (8 Cyl. 2 Bbl.)	4.060
61	SPRING, Throttle Control Return (8 Cyl.)	3.459
62	EXTENSION ASM., Carb. Lever (8 Cyl. 4 Bbl.)	3.454
63	BRACKET, Downshift Switch Mounting (8 Cyl. 2 Bbl.)	4.057
64	NUT, Idle Stop Solenoid to Mtg. Brkt. (1/4"-20).	8.915
65	EXTENSION ASM., Carb. Lever (8 Cyl. 2 Bbl.)	3.444

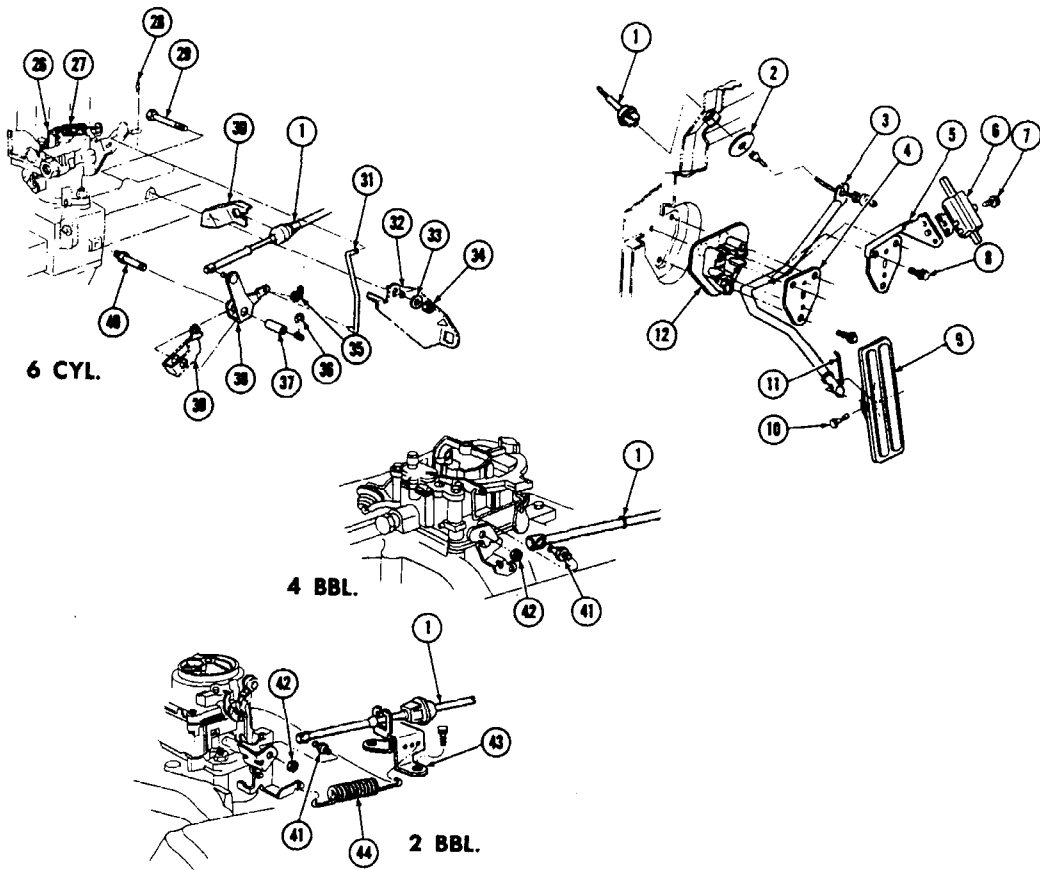
### 1969 FIREBIRD ACCELERATOR LINKAGE



**1970-71 FIREBIRD ACCELERATOR LINKAGE**

## 1970-71 FIREBIRD ACCELERATOR LINKAGE

Key	Part Name	Group No.
1	PEDAL ASM., Accelerator	3.451
	PLATE, Trim	3.451
2	SCREW, Accel. Pedal Reinforcement Mtg. (1/4"-14 x 1 1/2" Washer Hd.)	N.S.
3	SWITCH ASM., Downshift Control	4.057
4	SCREW, Switch Mtg. (1/4"-14 x 1/2" Hex Washer Hd.)	N.S.
5	REINFORCEMENT, Accel. Pedal (w/M-40 H.T.)	3.452
6	RETAINER, Cable to Accel. Rod	3.430
7	ROD ASM., Accel. Pedal	3.454
8	CABLE ASM., Throttle Control	3.430
9	PIN, Pedal to Rod	3.452
10	SPRING, Accel. Pedal Tension	3.459
11	REINFORCEMENT, Accel. Pedal (exc. M-40 H.T.)	3.452
12	SUPPORT, Accel. Pedal Rod	3.452
13	BRACKET, Downshift Control Cable	4.060
14	ROD, Carb. Lever to Accel. Control Lever (F/6)	3.430
15	SUPPORT, Accel. Control Cable (F/6)	3.454
16	CLIP, Control Lever Rod (F/6)	3.425
17	NUT, Solenoid Mtg. Brkt. (3/8"-24)	8.916
18	BRACKET, Idle Stop Solenoid Mtg. (F/6)	3.444
19	SOLENOID ASM., Idle Stop	3.440
20	BOLT, Mtg. Brkt. Brace to Brkt. (1/4"-20 x 1" Hex Hd.)	8.900
21	BRACE, Idle Stop Solenoid Mtg. Brkt. (F/6)	3.444
22	BOLT, Downshift Cont. Cable Brkt. Mtg. (3/8"-16 x 2 3/4")	8.900
23	SPRING, Carb. Throttle Control Return	3.459
24	STUD, Idler Lever	3.463
25	LEVER, Trans. Throttle Valve Control	4.050
26	LEVER ASM., Throttle Control Idler	3.463
27	SLEEVE, Idler Lever to Stud	3.463
28	RETAINER, Idler Lever ("E" Ring 3/8")	8.934
29	LOCKWASHER, Downshift Cont. Cable Brkt. Mtg. (3/8")	8.931
30	NUT, Downshift Cont. Cable Brkt. Mtg. (3/8"-16)	8.915
31	BRACKET, Idle Stop Solenoid Mtg. (F/8)	3.444
32	BOLT, Solenoid Mtg. (1/4"-20 x 5/8")	8.900
33	SOLENOID ASM., Idle Stop	3.440
34	NUT, Solenoid Mtg. (1/4"-20 Spec. Locking Hex)	N.S.
35	BOLT, Carb. Lever Extension Mtg. (1/4"-20 x 1/2")	8.900
36	EXTENSION ASM., Carb. Lever	3.454
37	WASHER, Cable to Extension (7/32" I.D. x 7/16" O.D.)	8.929
38	COTTER PIN, Cable to Extension (1/16" x 1/2")	8.938
39	WASHER, Cable Mtg. Brkt. (11/32" I.D. x 3/4" O.D.)	8.929
40	NUT, Cable Mtg. Brkt. (5/16"-18)	8.915
41	BOLT, Cable Mtg. Brkt. (5/16"-18 x 5/8")	8.900
42	BRACKET, Throttle Cont. Cable Mtg. (4 B.C.)	3.459
43	SPRING, Throttle Cont. Return	3.459
44	BRACKET, Throttle Cont. Cable Mtg. (2 B.C.)	3.459
45	EXTENSION, Carb. Lever	3.454
46	HOSE, Carb. to Vacuum Reservoir	3.765
47	TANK, Carb. Vacuum Reserve	3.765
48	CABLE ASM., Downshift Control	4.050
49	CLIP, Downshift Cont. Cable to Brkt.	4.060
50	SEAL, Downshift Cont. Cable to Trans.	4.047
51	BRACKET, Downshift Cont. Cable	4.060
52	CLIP, Lever Rod to Carb. (Upper Rod End) (1971)	3.430
53	RETAINER, Throttle Control Cable to Dash Insulator	3.430



**1972 FIREBIRD ACCELERATOR LINKAGE**

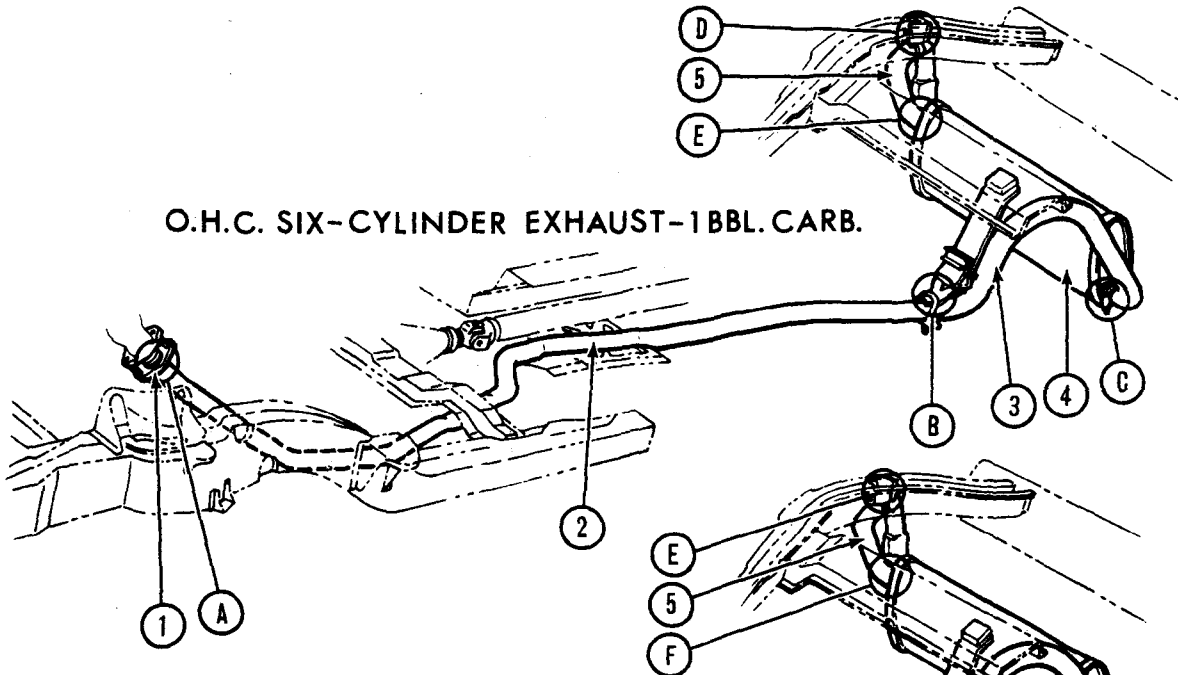
Key	Part Name	Group No.	Key	Part Name	Group No.
1	CABLE ASM., Throttle Control	3.430	30	SUPPORT, Accelerator Pedal Rod	3.452
2	RETAINER, Throttle Cable to Dash Insulator	3.430	31	ROD, Carb. to Idler Lever	3.430
3	ROD ASM., Accelerator Pedal	3.431	32	BRACKET, Downshift Cable	4.060
4	REINFORCEMENT, Pedal (Exc. M-40 H.T.)	3.452	33	LOCKWASHER (3/8")	8.931
5	REINFORCEMENT, Pedal	3.452	34	NUT (3/8"-16)	8.915
6	SWITCH, Downshift Control	4.057	35	CLIP, Carb. to Accelerator Cont. Lever Rod	3.425
7	SCREW (1/4"-14 x 1/2")	N.S.	36	RING, Idler Lever ("E" 3/8")	8.934
8	SCREW (1/4"-14 x 1")	8.977	37	SLEEVE, Accel. Lever Stud	3.463
9	PEDAL, Accelerator	3.451	38	LEVER, Throttle Control Idler	3.463
10	PIN, Pedal Rod Clevis	3.452	39	LEVER, Trans. Throttle Valve Control	4.050
11	SPRING, Pedal Tension to Control Rod	3.459	40	STUD, Accel. Control Lever	3.463
12	SUPPORT, Accelerator Pedal Rod	3.452	41	STUD, Accel. Cable to Carb. Lever Ball	3.452
26	ANCHOR, Throttle Control Return Spring	3.459	42	NUT (1/4"-20)	8.915
27	SPRING, Throttle Control Return	3.459	43	BRACKET, Throttle Control Cable Mtg.	3.459
28	RETAINER, Carb. to Accel. Control Lever Rod	3.430	44	SPRING, Throttle Control Return	3.459
29	BOLT, Brkt. to Manifold (3/8"-16 x 2-3/4")	8.900			



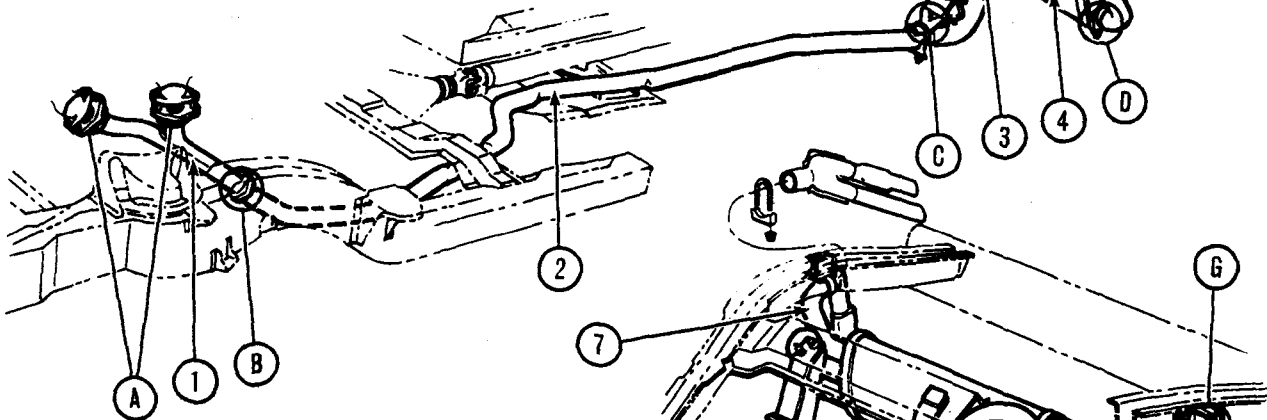




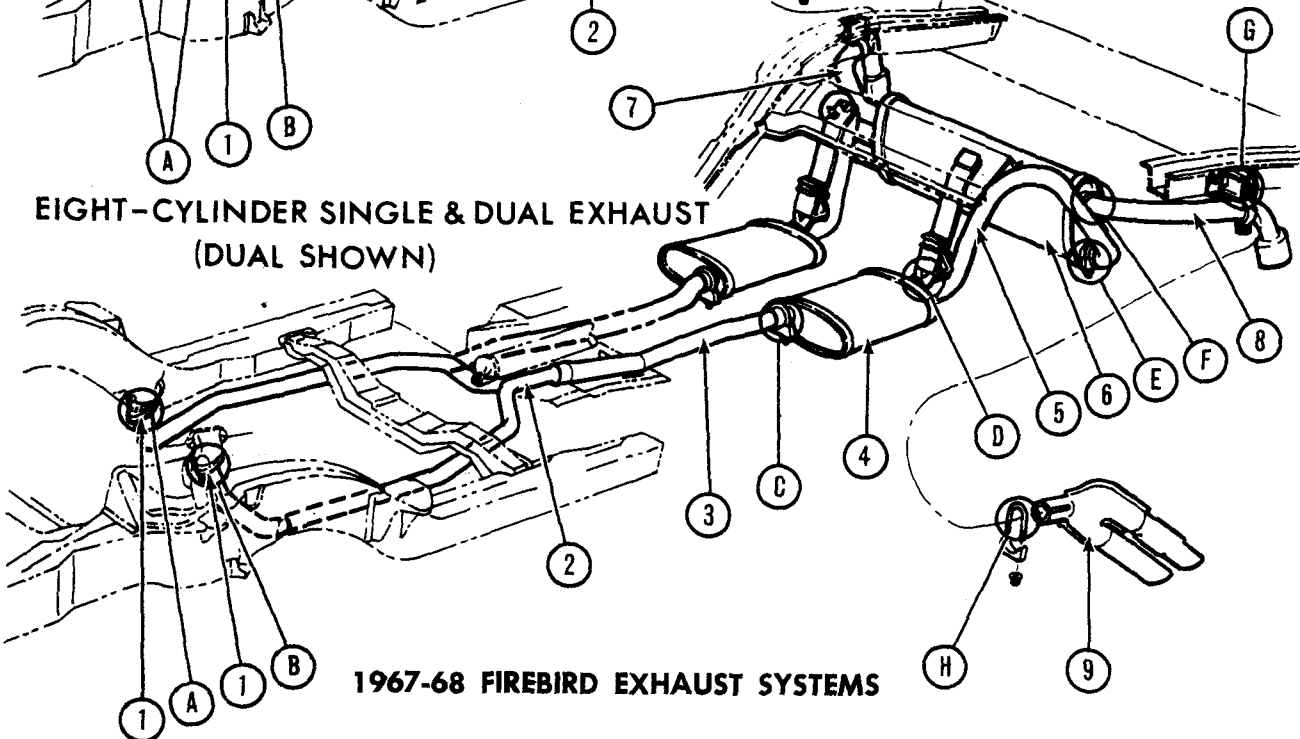
O.H.C. SIX-CYLINDER EXHAUST-1BBL. CARB.



O.H.C. SIX-CYLINDER EXHAUST-4 BBL. CARB.



EIGHT-CYLINDER SINGLE & DUAL EXHAUST  
(DUAL SHOWN)



1967-68 FIREBIRD EXHAUST SYSTEMS





**1967-68 FIREBIRD EXHAUST SYSTEMS**

Key	Group No.	Qty.	Part No.	Description
<b>O.H.C. SIX-CYLINDER EXHAUST —</b>				
<b>1 BARREL CARBURETOR</b>				
<b>EXHAUST PARTS</b>				
1	3.610	1	9789096	FLANGE, Exhaust Pipe
2	3.609	1	9777669	PIPE, Exhaust - Front
3	3.609	1	9789701	PIPE, Exhaust - Rear
4	3.701	1	9789773	MUFFLER, Exhaust
5	3.705	1	9796870	PIPE, Muffler Tail
<b>ATTACHING PARTS</b>				
A	3.613	2	9777812	BOLT, Flange to Manifold ( $\frac{3}{8}$ "-16 x 2")
B	3.708	1	9784415	CLAMP PKG., Hanger to Pipe
	3.704	1	3908360	1967—HANGER ASM., Exhaust Pipe
	3.704	1	3930087	HANGER ASSY., Exhaust Pipe
C	3.708	1	9784415	CLAMP PKG., Muffler to Pipe
D	3.706	1	3892790	HANGER ASM., Tail Pipe
	3.706	1	1362006	CLAMP, Hanger to Pipe
	3.706	1	9429462	SCREW, Clamp to Hanger
E	3.708	1	9784415	CLAMP PKG., Muffler to Tail Pipe

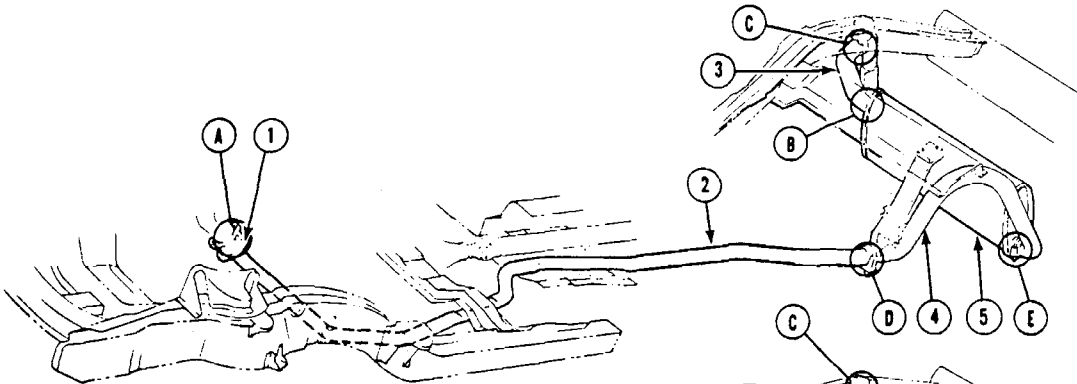
Key	Group No.	Qty.	Part No.	Description
<b>O.H.C. SIX-CYLINDER EXHAUST —</b>				
<b>4 BARREL CARBURETOR</b>				
<b>EXHAUST PARTS</b>				
1	3.609	1	9777678	PIPE, Exhaust - Front (1967)
	3.609	1	9777716	PIPE, Exhaust - Front (1968)
2	3.609	1	9777668	PIPE, Exhaust Inter. (1967)
	3.609	1	9792647	PIPE, Exhaust - Inter. (1968)
3	3.609	1	9789700	PIPE, Exhaust - Rear
4	3.701	1	9789774	MUFFLER, Exhaust (25 $\frac{1}{4}$ in. Long)
5	3.705	1	9796870	PIPE, Muffler Tail (A.T.)
	3.705	1	9789907	PIPE, Muffler Tail (S.T.)
<b>ATTACHING PARTS</b>				
A	3.613	AR	9777812	BOLT, Flange to Manifold ( $\frac{3}{8}$ "-16 x 2")
B	3.708	1	9784420	CLAMP PKG., Front Pipe to Intermediate Pipe
C	3.708	1	9784416	CLAMP PKG., Hanger to Pipe
	3.704	1	3908360	1967 HANGER ASM., Exhaust Pipe
	3.704	1	3930087	1968 HANGER ASSY., Exhaust Pipe
D	3.708	1	9784416	CLAMP PKG., Muffler to Pipe
E	3.706	1	3892790	HANGER ASM., Tail Pipe
	3.706	1	1362006	CLAMP, Hanger to Pipe
	3.706	1	9429462	SCREW, Clamp to Hanger
F	3.708	1	9784416	CLAMP PKG., Muffler to Tail Pipe

Key	Group No.	Qty.	Part No.	Description
<b>EIGHT-CYLINDER EXHAUST —</b>				
<b>SINGLE &amp; DUAL (DUAL SHOWN)</b>				
<b>EXHAUST PARTS</b>				
1	3.610	2	9789096 *	FLANGE, Exhaust Pipe (Dual)
	3.610	2	9780260 †	FLANGE, Exhaust Pipe (Dual)
2	3.609	1	9777670 *	PIPE, Exhaust - Front - R.H. (Dual)
	3.609	1	9777672 *	PIPE, Exhaust - Front - L.H. (Dual)
	3.609	1	9781965 †	PIPE, Exhaust - Front - R.H. (Dual)
	3.609	1	9781967 †	PIPE, Exhaust - Front - L.H. - (Dual)
	3.609	1	9777628	PIPE, Exhaust - Front (Single)
3	3.609	1	9789700	PIPE, Exhaust - Rear (Single)
4	3.702	1	9789548	RESONATOR, Exhaust - R.H. (Dual)

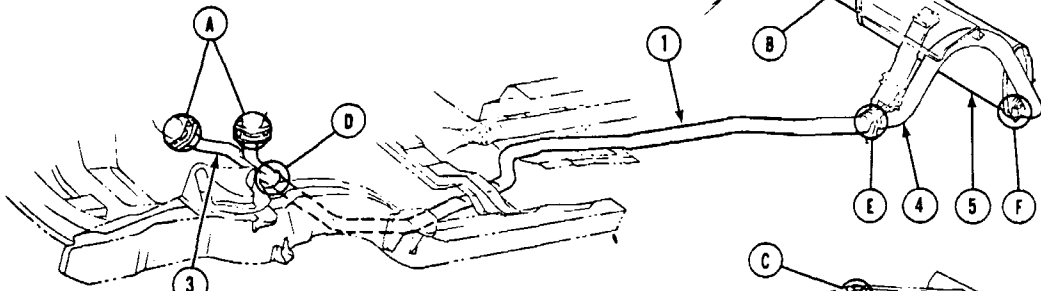
Key	Group No.	Qty.	Part No.	Description
<b>EIGHT-CYLINDER EXHAUST —</b>				
<b>SINGLE &amp; DUAL (DUAL SHOWN)</b>				
<b>EXHAUST PARTS (CONTINUED)</b>				
	3.702	1	9789549	RESONATOR, Exhaust - L.H. (Dual)
5	3.609	1	9797467	PIPE, Exhaust - Rear - R.H. (Dual)
	3.609	1	9789700	PIPE, Exhaust - Rear - L.H. (Dual)
6	3.701	1	9789772	MUFFLER, Exhaust (Dual)
	3.701	1	9789774	MUFFLER, Exhaust (Single)
7	3.705	1	9796869	PIPE, Muffler Tail - R.H. (Dual)
	3.705	1	9796870	PIPE, Muffler Tail (Single)
8	3.705	1	9789703	PIPE, Muffler Tail - L.H. (Dual)
9	3.705	1	9789850	EXTENSION, Tail Pipe - Right
	3.705	1	9789851	EXTENSION, Tail Pipe - Left
<b>ATTACHING PARTS</b>				
A	Cat.907A	1	427559 †	BOLT, Flange to Manifold - R.H. ( $\frac{3}{8}$ "-16 x 2")
	3.613	2	9777812 *	BOLT, Flange to Manifold - R.H. ( $\frac{3}{8}$ "-16 x 1 $\frac{5}{8}$ ")
B	S.S.	2	522871 †	BOLT, Flange to Manifold - L.H.
	3.613	2	3829473 *	STUD, Manifold to Flange - L.H.
C	Cat.907A	2	3829086 *	NUT, Stud to Manifold & Flange
	3.708	2	9784415	CLAMP PKG., Resonator to Pipe - Front
D	3.708	2	9784416	CLAMP PKG., Resonator to Pipe - Rear (Dual)
	3.708	1	9784416	CLAMP PKG., Hanger to Pipe (Single)
	3.704	2	3908360	HANGER ASM., Exhaust Pipe (Single & Dual) 1st Type Single on 1967
	Cat.907A	AR	180081	BOLT, Bracket
	3.706	2	3792287	NUT, Hanger to Frame - R.H. ( $\frac{5}{8}$ "-18) (Dual)
	3.706	1	9785977	HANGER, Pipe & Muffler (8-Cyl. Single) (2nd Type on 1967)
	3.706	1	9785977	—1968 HANGER - Single
	3.704	1	9785976	BRACKET, Pipe & Muffler Supt. (8-Cyl. Single) (2nd Type on 1967)
	3.704	1	9777300	BRACKET, Muffler Supt. to Pipe Brkt. (8-Cyl. Single) (2nd Type on 1967)
E	3.708	2	9784416	CLAMP PKG., Pipe to Muffler (Dual)
	3.708	1	9784416	CLAMP PKG., Pipe to Muffler (Single)
F	3.708	2	9784415	CLAMP PKG., Muffler to Tail Pipe (Dual)
	3.708	1	9784415	CLAMP PKG., Muffler to Tail Pipe (Single)
G	3.706	1	3892790	HANGER ASM., Tail Pipe - R.H. (Single & Dual)
	3.706	1	3892789	HANGER ASM., Tail Pipe - L.H. (Dual)
	3.706	2	1362006	CLAMP, Hanger to Pipe
	3.706	2	3818073	NUT, Hanger to Frame - Left $\frac{1}{4}$ "-20 Blind)
	3.706	2	9429462	SCREW, Tail Pipe Clamp (#20-9 x 1 $\frac{1}{2}$ ")
H	3.708	2	9784415	CLAMP PKG., Extension (Also Incl. in Ext. Pkg.)

\* — Exc. 400 Eng. with HO or Ram Air

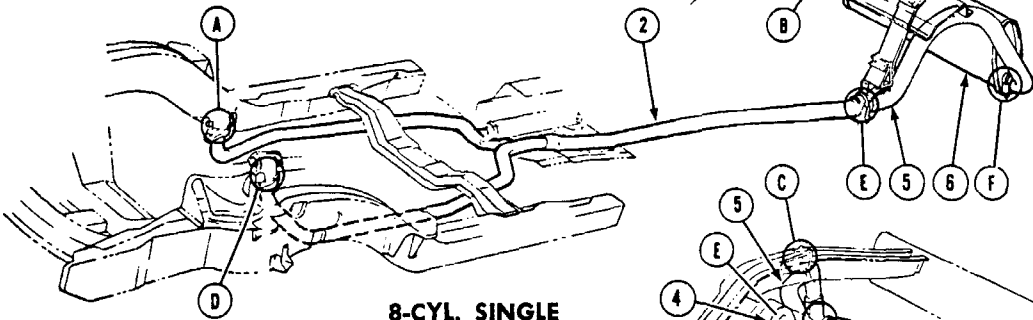
† — With 400 Eng. HO or Ram Air



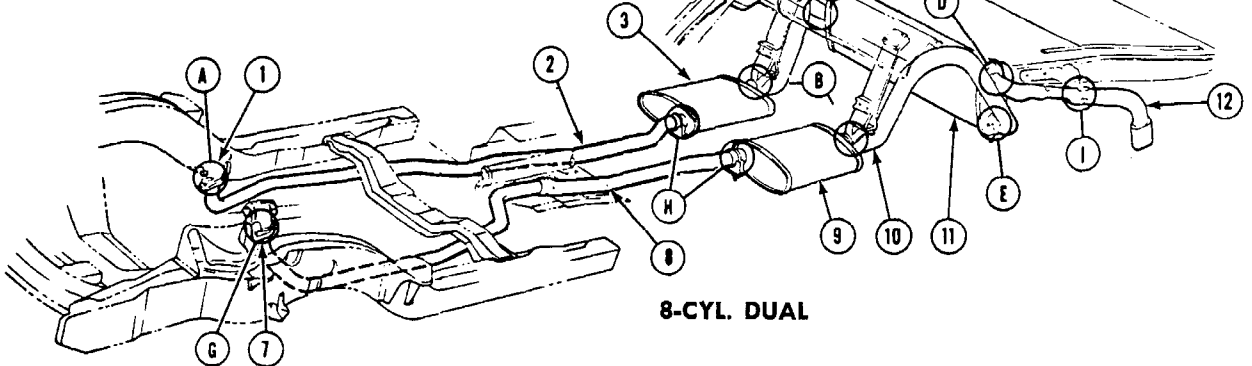
**6-CYL. 1 BBL.**



**6-CYL. 4 BBL.**



**8-CYL. SINGLE**



**8-CYL. DUAL**

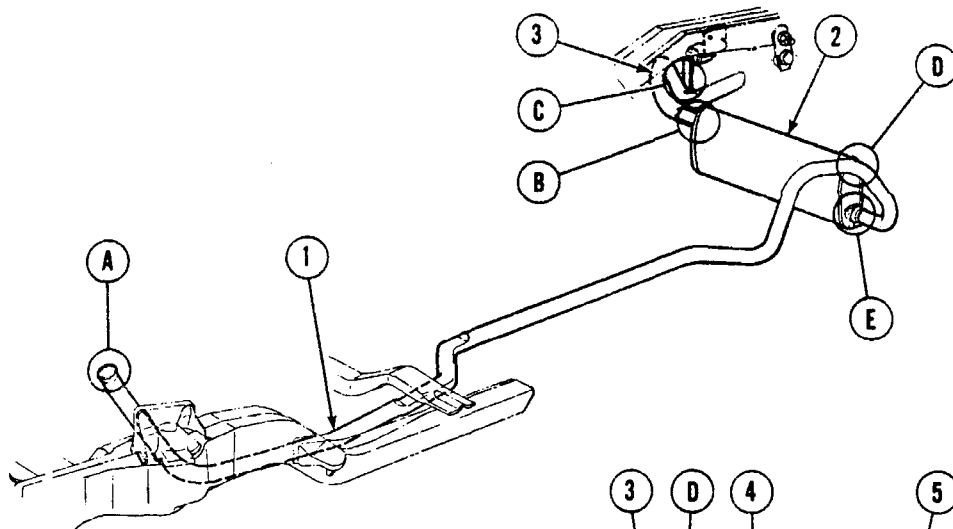
**1969 FIREBIRD EXHAUST SYSTEMS — EXC. 303 ENGINE OR RAM AIR V**

Key	Group No.	Qty.	Part No.	Description
<b>O.H.C. SIX-CYLINDER EXHAUST</b>				
<b>1-BARREL CARBURETOR</b>				
<b>EXHAUST PARTS</b>				
1	3.610	1	9789096	FLANGE, Exhaust Pipe
2	3.609	1	9777669	PIPE, Exhaust - Front
3	3.705	1	9796870	PIPE, Muffler Tail
4	3.609	1	9789701	PIPE, Exhaust - Rear
5	3.701	1	9789773	MUFFLER, Exhaust
<b>ATTACHING PARTS</b>				
A	3.613	2	9777812	BOLT, Flange to Manifold - (3/8"-16 x 2")
B	3.708	1	9784415	CLAMP PKG., Muffler to Tail Pipe
C	3.706	1	9798848	SUPPORT ASM., Tail Pipe
	3.706	1	1362006	CLAMP, Tail Pipe Support
	3.706	2	9429462	SCREW, Clamp
D	3.704	1	3930087	HANGER ASM., Exhaust Pipe
	3.708	1	9784415	CLAMP PKG., Muffler to Rear Exh. Pipe
E	3.708	1	9784415	CLAMP PKG., Tail Pipe
<b>O.H.C. SIX-CYLINDER EXHAUST</b>				
<b>4-BARREL CARBURETOR</b>				
<b>EXHAUST PARTS</b>				
1	3.609	1	9792647	PIPE, Exhaust - Intermediate
2	3.705	1	9796870	PIPE, Muffler Tail
3	3.609	1	9777716	PIPE, Exhaust - Front
4	3.609	1	9789700	PIPE, Exhaust - Rear
5	3.701	1	9789774	MUFFLER, Exhaust
<b>ATTACHING PARTS</b>				
A	3.613	2	9777812	BOLT, Flange to Manifold - (3/8"-16 x 2")
B	3.708	1	9784416	CLAMP PKG., Muffler to Tail Pipe
C	3.706	1	9798848	SUPPORT ASM., Tail Pipe
	3.706	1	1362006	CLAMP, Tail Pipe Support
	3.706	2	9429462	SCREW, Clamp
D	3.708	1	9784420	CLAMP PKG., Front Pipe to Intermediate Pipe
E	3.704	1	3930087	HANGER ASM., Exhaust Pipe
	3.708	1	9784416	CLAMP PKG., Exhaust Pipe
F	3.708	1	9784416	CLAMP PKG., Muffler to Pipe
<b>EIGHT CYLINDER — SINGLE EXHAUST</b>				
<b>EXHAUST PARTS</b>				
2	3.609	1	9784392	PIPE, Exhaust - Front
3	3.705	1	9796870	PIPE, Muffler Tail
5	3.609	1	9789700	PIPE, Exhaust - Rear
6	3.701	1	9789774	MUFFLER, Exhaust
<b>ATTACHING PARTS</b>				
A	3.613	2	9777812	BOLT, Flange to Manifold
B	3.708	1	9784415	CLAMP PKG., Muffler to Tail Pipe
C	3.706	1	9798848	HANGER ASM., Tail Pipe
	3.706	1	1362006	CLAMP, Tail Pipe Support
	3.706	2	9429462	SCREW, Clamp
D	3.613	2	3760425	STUD, Manifold to Flange
	S.S.	2	1361640	NUT, Stud to Manifold & Flange
E	3.704	1	9785977	HANGER ASM., Exhaust Pipe
	3.708	1	9784416	CLAMP PKG., Front to Rear Pipe
	3.708	1	9784416	CLAMP PKG., Exhaust Pipe to Support
	3.704	1	9777300	BRACKET, Exhaust Pipe Support - Upper
	3.704	1	9785976	BRACKET, Exhaust Pipe Support - Lower

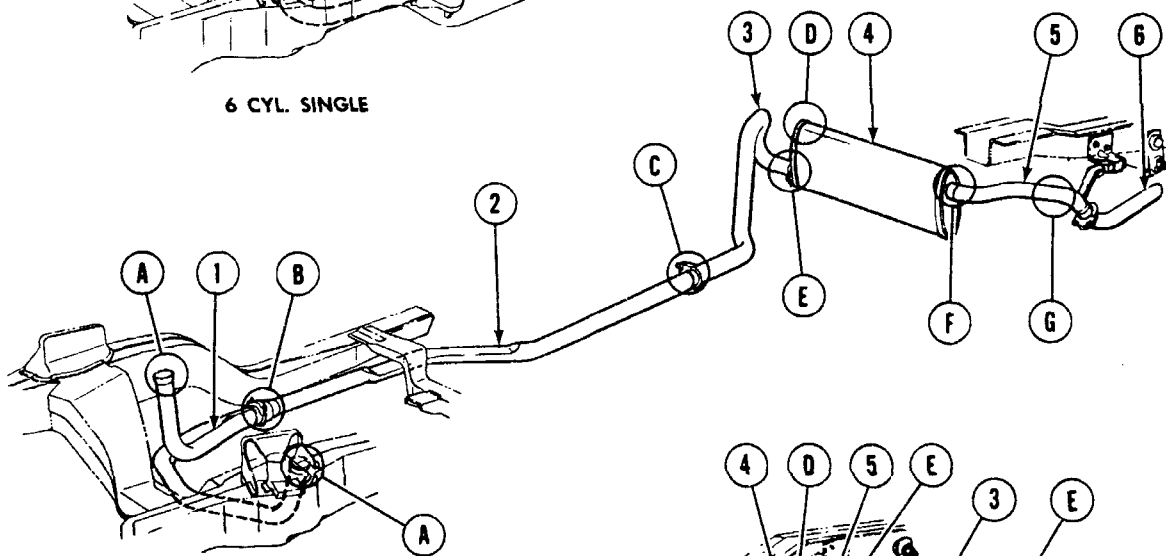
Key	Group No.	Qty.	Part No.	Description
<b>EIGHT CYLINDER — SINGLE EXHAUST</b>				
<b>ATTACHING PARTS</b>				
<b>(CONTINUED)</b>				
Cat.907A		2	180081	BOLT, Upper to Lower Bracket
S.S.		2	274218	NUT, Bolt to Upper & Lower Bracket
F	3.708	1	9784416	CLAMP PKG., Muffler to Rear Exh. Pipe
<b>EIGHT CYLINDER — DUAL EXHAUST</b>				
<b>EXHAUST PARTS</b>				
1	3.610	1	9798886	FLANGE, Exhaust Pipe - R.H. - With 400 Eng. HO or Ram Air IV
	3.610	1	9789096	FLANGE, Exhaust Pipe - R.H. - exc. 400 Eng. with HO or Ram Air IV
2	3.609	1	9781965	PIPE, Exhaust - Front - R.H. - With 400 Eng. HO or Ram Air IV
	3.609	1	9797132	PIPE, Exhaust - Front - R.H. - exc. 400 Eng. with HO or Ram Air IV
3	3.702	1	9789548	RESONATOR, Exhaust - R.H.
4	3.609	1	9797467	PIPE, Exhaust - Rear - R.H.
5	3.705	1	9796869	PIPE, Muffler - Tail - R.H.
7	3.610	1	9798886	FLANGE, Exhaust Pipe - L.H. - With 400 Eng. HO or Ram Air IV
	3.610	1	9789096	FLANGE, Exhaust Pipe - L.H. - exc. 400 Eng. with HO or Ram Air IV
8	3.609	1	9781967	PIPE, Exhaust - Front - L.H. - With 400 Eng. HO or Ram Air IV
	3.609	1	9796600	PIPE, Exhaust - Front - L.H. - exc. 400 Eng. with HO or Ram Air IV
9	3.702	1	9789549	RESONATOR, Exhaust - L.H.
10	3.609	1	9789700	PIPE, Exhaust - Rear - L.H.
11	3.701	1	9789772	MUFFLER, Exhaust
12	3.705	1	9796797	PIPE, Muffler Tail - L.H.
<b>ATTACHING PARTS</b>				
A	Cat907A	2	427559	BOLT, Flange to Manifold with 400 Eng. HO or Ram Air IV
	3.613	2	9777812	BOLT, Flange to Manifold - exc. 400 Eng. with HO or Ram Air IV
B	3.704	2	3930087	HANGER ASM., Rear Exh. Pipe to Resonator
	3.708	2	9784416	CLAMP PKG., Exh. Pipe Hanger
C	3.706	1	9798848	SUPPORT ASM., Tail Pipe - R.H.
	3.706	1	1362006	CLAMP, Tail Pipe Support
	3.706	2	9429462	SCREW, Clamp
D	3.708	1	9784415	CLAMP PKG., Muffler to Tail Pipe
E	3.708	1	9784416	CLAMP PKG., Muffler to Rear Exh. Pipe
G	Cat.907A	2	454906	BOLT, Flange to Manifold - With 400 Eng. HO or Ram Air IV
	3.613	2	3760425	STUD, Flange to Manifold - exc. 400 Eng. with HO or Ram Air IV
	S.S.	2	1361640	NUT, Stud to Manifold - exc. 400 Eng. with HO or Ram Air
H	3.708	1	9784415	CLAMP PKG., Exhaust Pipe to Resonator
I	3.706	1	9798849	SUPPORT ASM., Tail Pipe - L.H.
	3.706	1	1362006	CLAMP, Tail Pipe Support
	3.706	2	9429462	SCREW, Clamp



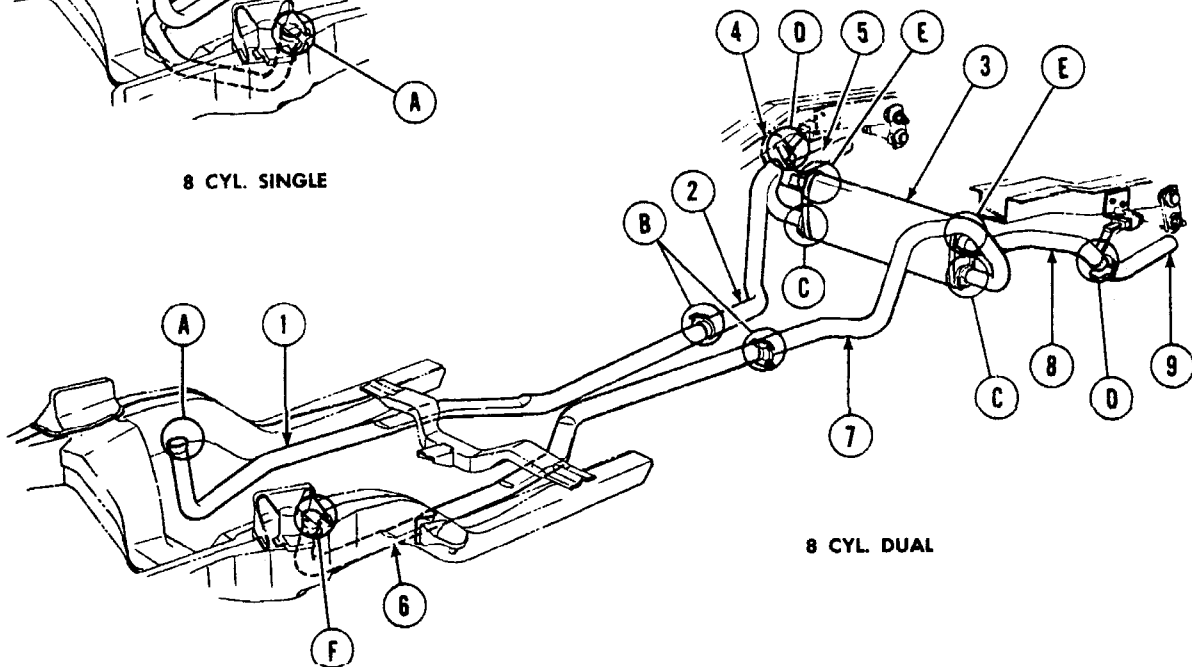
**FIREBIRD**  
PARTS CATALOGUE



6 CYL. SINGLE



8 CYL. SINGLE



8 CYL. DUAL

**1970-72 FIREBIRD EXHAUST SYSTEMS**

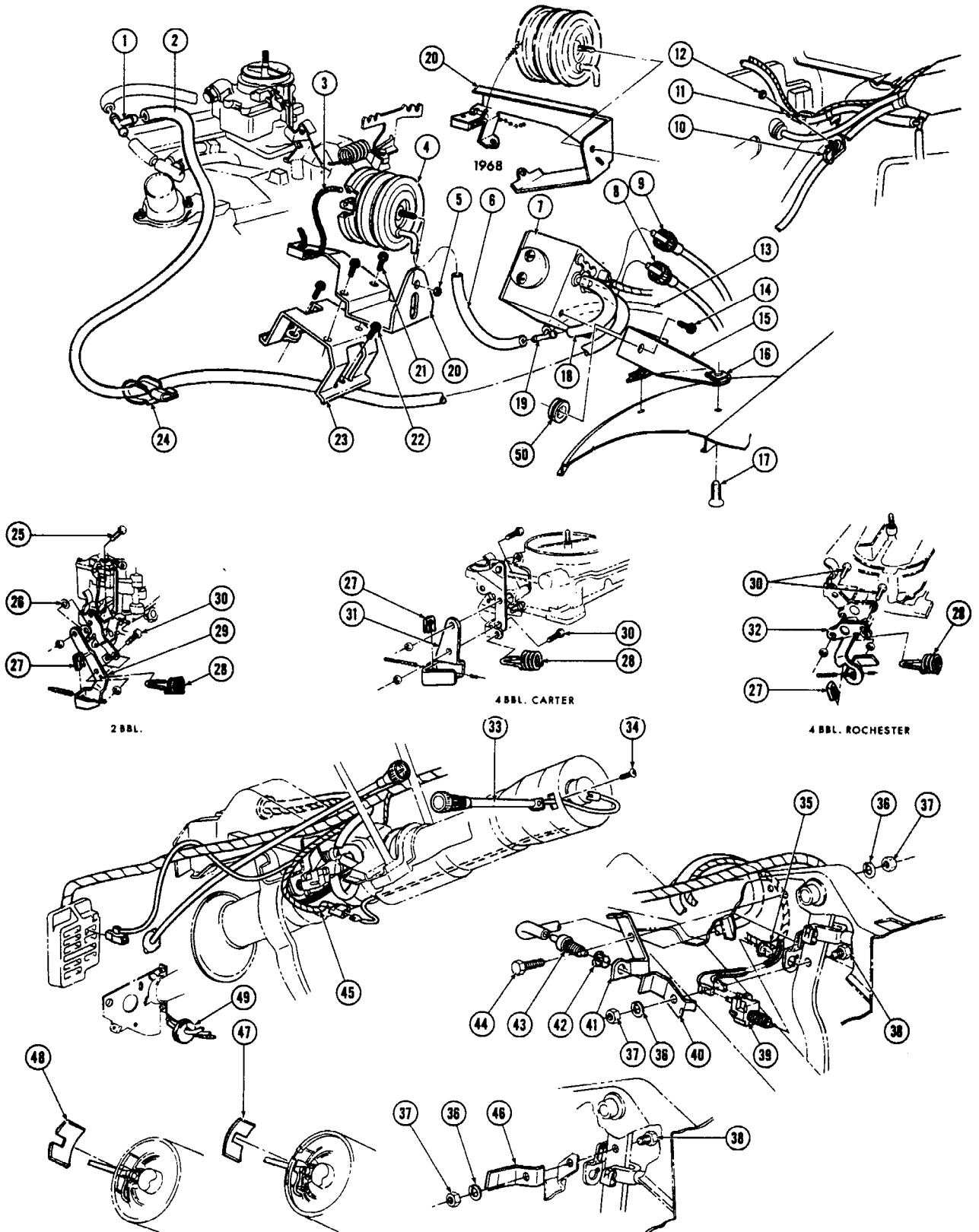


# FIREBIRD

## PARTS CATALOGUE

Key	Group No.	Qty.	Part No.	Description	Key	Group No.	Qty.	Part No.	Description
<b>SINGLE EXHAUST SYSTEM</b>					<b>ATTACHING PARTS (CONTINUED)</b>				
1	3.609	1	3972209	PIPE, Exhaust	3.706	1	3996317	BRACKET, Muffler Hanger	
2	3.701	1	3984559	MUFFLER, Exhaust	3.706	1	3996318	INSULATOR, Muffler Hanger	
3	3.705	1	3984558	PIPE, Tail (1970)	3.706	1	3972221	SCREW, Hanger to Frame	
	3.705	1	3992575	PIPE TAIL (1971)	8.977	1	9416928	SCREW, Upper to Lower Clamp (5/16"-18 x 3/4")	
<b>ATTACHING PARTS</b>					G	3.706	1	3983053	HANGER, Tail Pipe
A	3.609	1	3890382	EXTENSION, Pipe to Mfid. (1970)	8.977	2	9419402	SCREW, Hanger to Frame (5/16"-18 x 3/4")	
	3.609	1	3748781	EXTENSION, Pipe to Mfid. (1971-72)	3.708	1	1396600	CLAMP PKG., Pipe to Ext. (2 1/4")	
	3.611	1	3731062	RING, Pipe to Mfid. Sealing	<b>EIGHT CYLINDER—DUAL EXHAUST</b>				
	8.917	2	9413322	NUT, Pipe to Mfid. (3/8"-16)	1	3.609	1	480422	PIPE, Exhaust - Front - R.H. (Exc. Ram Air)
B	3.708	1	3983049	CLAMP, Muffler to Hanger (Upper)	3.609	1	480429	PIPE, Exhaust - Front - R.H. (Ram Air)	
	3.708	1	3992572	CLAMP, Muffler to Hanger (Lower)	2	3.609	1	480426	PIPE, Exhaust - Rear - R.H. (All)
	3.706	1	3996317	BRACKET, Muffler Hanger (1971-72)	3	3.701	1	481724	MUFFLER, Exhaust - (1970)
	3.706	1	3996318	INSULATOR, Muffler Hanger (1971-72)				484965	MUFFLER, Exhaust - (1971-72)
	3.706	1	3972221	SCREW, Hanger to Frame	3.701	1	484965	MUFFLER, Exhaust - 4 Bbl. (1970)	
	8.977	1	9416928	SCREW, Upper to Lower Clamp (5/16"-18 x 1 1/4")	4	3.705	1	481721	PIPE, Tail - R.H. (All)
C	3.706	1	3983053	HANGER, Tail Pipe	5	3.705	1	481525	EXTENSION, Tail Pipe - 4 Bbl.
	8.977	2	9419402	SCREW, Hanger to Frame (5/16"-18 x 3/4")	6	3.609	1	480424	PIPE, Exhaust - Front - L.H. (Exc. Ram Air)
D	3.704	1	3983052	SUPPORT, Muffler				480431	PIPE, Exhaust - Front - L.H. (Ram Air)
	3.706	1	3996317	BRACKET, Muffler Hanger	7	3.609	1	480427	PIPE, Exhaust - Rear - L.H. (All)
	3.706	1	3996318	INSULATOR, Muffler Hanger	8	3.705	1	481722	PIPE, Tail - L.H. (All)
	8.977	1	9419402	SCREW, Supt. to Muffler (5/16"-18 x 3/4")	9	3.705	1	481526	EXTENSION, Tail Pipe - 2 Bbl.
	3.706	1	3972221	SCREW, Hanger to Frame	1	481525	EXTENSION, Tail Pipe - 4 Bbl.		
E	3.708	1	1396600	CLAMP PKG., Pipe to Muffler (2 1/4")					
<b>EIGHT CYLINDER—SINGLE EXHAUST</b>					<b>ATTACHING PARTS</b>				
1	3.609	1	480420	PIPE, Crossover	A	3.613	2	3760425	STUD, Pipe to Mfid. (1970)
2	3.609	1	480428	PIPE, Intermediate		3.613	4	483543	STUD, Pipe to Mfid. (1971-72)
3	3.609	1	480426	PIPE, Rear		3.023	2	1361640	NUT, Pipe to Mfid.
4	3.701	1	481724	MUFFLER, Exhaust (2 Bbl.)		8.900	3	9420462	BOLT, Pipe to Mfid.
5	3.705	1	485532	PIPE, Tail	B	3.708	2	1396600	CLAMP PKG., Frt. to Rear
6	3.705	1	481526	EXTENSION, Tail Pipe	C	3.708	2	1396600	CLAMP PKG., Pipe to Muffler
<b>ATTACHING PARTS</b>					D	3.706	2	3983053	HANGER, Tail Pipe
A	3.613	4	3760425	STUD, Pipe to Mfid. (1970)		8.977	4	9419402	SCREW, Hanger to Frame (5/16"-18 x 3/4")
	3.613	4	483543	STUD, Pipe to Mfid. (1971-72)	E	3.708	2	1396600	CLAMP PKG., Pipe to Ext.
	3.023	4	1361640	NUT, Pipe to Mfid. (3/8"-16)		3.708	2	3972221	SCREW, Hanger to Frame
B	3.708	1	5721563	CLAMP PKG., Crossover Pipe (2 1/2")		3.708	2	3983049	CLAMP, Muffler to Hanger (Upper)
C	3.708	1	1396600	CLAMP PKG., Int. to Rear Pipe (2 1/4")		3.708	1	3992572	CLAMP, Muffler to Hanger (Lower)
D	3.708	1	3983052	SUPPORT, Muffler		3.706	1	3996317	BRACKET, Muffler Hanger
	3.704	1	483775	SUPPORT, Muffler - L.H. 2 Bbl. Exc. Formula 350 (1971-72)		3.706	1	3996318	INSULATOR, Muffler Hanger
	3.706	1	3996317	BRACKET, Muffler Hanger		8.977	2	9416928	SCREW, Upper to Lower Clamp (5/16"-18 x 1 1/4")
	3.706	1	3996318	INSULATOR, Muffler Hanger	F	3.613	2	3760425	STUD, Pipe to Mfid. (1970)
	3.706	1	3972221	SCREW, Hanger to Frame		3.613	4	483543	STUD, Pipe to Mfid. (1971-72)
	8.977	1	9419402	SCREW, Support to Muffler (5/16"-18 x 3/4")		3.023	2	1361640	NUT, Pipe to Mfid. (Exc.
E	3.708	1	1396600	CLAMP PKG., Pipe to Muffler (2 1/4")		8.900	2	9420462	BOLT, Pipe to Mfid. (Ram Air)
F	3.708	1	3983049	CLAMP, Muffler to Hanger (Upper)					
	3.708	1	3992572	CLAMP, Muffler to Hanger (Lower)					

### 1970-72 FIREBIRD EXHAUST SYSTEMS

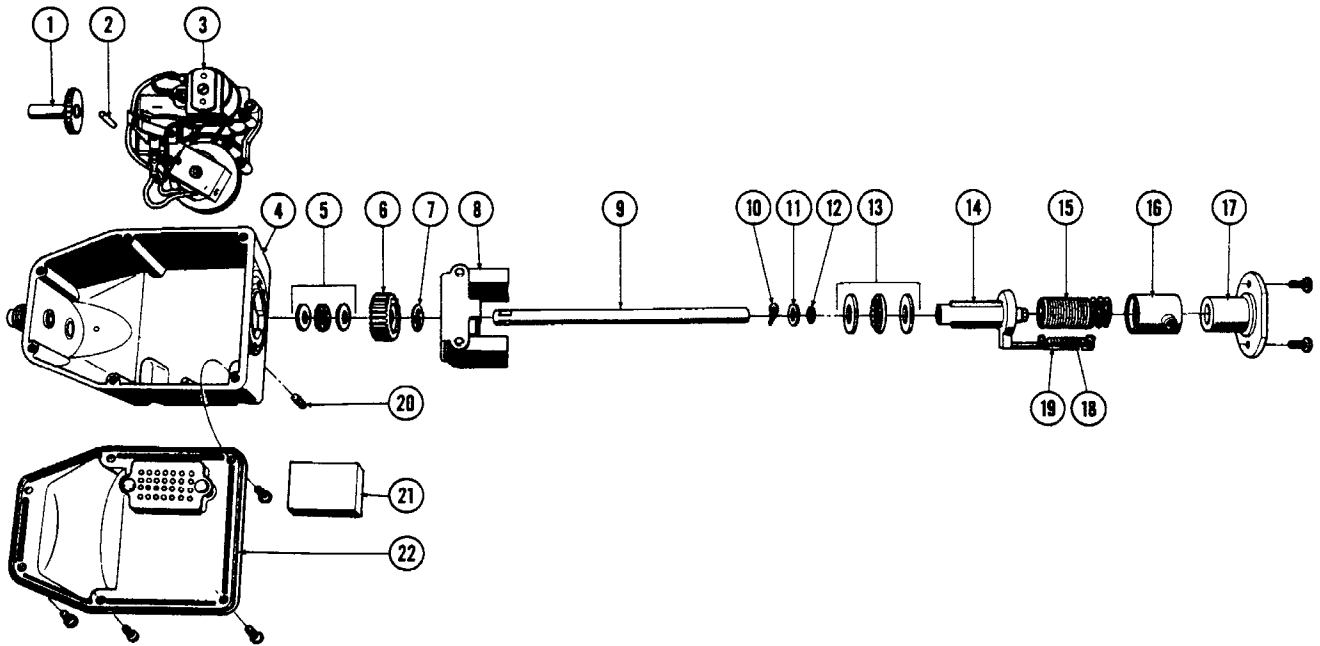


### 1967-68 CRUISE CONTROL SYSTEM

<b>GM</b>	<b>FIREBIRD</b> PARTS CATALOGUE
-----------	------------------------------------

Key	Part Name	Group No.
1	TEE, Cruise Control Hose Vacuum Source-3 Way	3.885
2	HOSE, Tee to Regulator (7/32" x 39")	3.885
3	CHAIN ASM., Cruise Control-Bead	3.885
4	SERVO ASM., Cruise Control Vacuum	3.887
5	NUT, Servo to Mounting Bracket (1/4"-20)	8.915
6	HOSE, Tee to Servo (9/32" x 9 1/4")	3.885
7	REGULATOR ASM., Cruise Control	3.885
8	CABLE & CASING ASM., Speedometer-Upper	4.342
9	CABLE & CASING ASM., Speedometer-Lower	4.342
10	CLIP, Speedometer Cable	N.S.
11	STRAP, Cruise Control Switch Hose to Wire Harness	3.885
12	NUT, Cable Clip to Fender Skirt (5/16"-18)	8.915
13	HOSE, Tee to Release Switch (7/32" x 53")	3.885
14	SCREW, Regulator to Brkt. (1/4"-20 x 1/2")	8.977
15	BRACKET, Cruise Control Regulator	3.885
16	NUT, Regulator Bracket to Skirt (5/16"-12 "U" Shape)	8.921
17	SCREW, Regulator Bracket to Skirt (5/16"-12 x 5/8")	8.977
18	HOSE, Regulator to Tee (9/32" x 7 3/4")	3.885
19	TEE, Cruise Control Vacuum Hose Release Switch	3.885
20	BRACKET ASM., Cruise Control Servo Support	3.885
21	SCREW, Servo Bracket to Power Unit Brkt. (1/4"-20 x 1/2")	8.977
22	BOLT, Rocker Arm Cover	0.413
23	BRACKET, Cruise Control Power Servo	3.885
24	CLIP, Regulator Hose to Servo Supt. Brkt.	N.S.
25	BOLT, Carb. Lever Extension (1/4"-20 x 3/4")	8.900
26	WASHER, Carb. Lever Extension (11/32" I.D. x 3/4" O.D. x 3/32")	2.277
27	CLIP, Bead Chain to Carb. Extension	3.885
28	SPRING, Throttle Control Return	3.459
29	EXTENSION, Carb. Lever (4 Holes) (326-2 B.C.)	3.454
30	BOLT, Carb. Lever Extension (1/4"-20 x 5/8")	8.900
31	EXTENSION, Carb. Lever (3 Holes) (326-4 B.C.)	3.454
32	EXTENSION, Carb. Lever (400-4 B.C.)	3.454
33	LEVER & SWITCH ASM., Direction Signal	3.887
34	SCREW, Lever to Switch (#8-32 x 5/8")	8.977
35	CLIP, Stop Light Switch to Bracket	2.447
36	LOCKWASHER, Striker to Pedal (5/16")	8.931
37	NUT, Striker to Pedal (5/16"-18)	8.915
38	BOLT, Striker to Pedal (5/16"-18 x 7/8")	8.900
39	SWITCH ASM., Stop Light & Cruise Control Release	2.447
40	STRIKER, Cruise Control Vacuum Release Valve (S.B.)	3.880
41	BRACKET, Cruise Control Vacuum Release Valve	3.880
42	CLIP, Release Switch to Bracket	3.885
43	SWITCH ASM., Cruise Control Vacuum Release	3.887
44	BOLT, Valve Bracket to Pedal Bracket (5/16"-18 x 3/4")	8.900
45	WIRE ASM., Cruise Control	3.887
46	STRIKER, Cruise Control Vacuum Release Valve (P.B.)	3.880
47	SHIELD, Cruise Cont. Engage Switch Wire (Tilt Wheel)	3.885
48	SHIELD, Cruise Cont. Engage Switch Wire (Exc. Tilt Wheel)	3.885
49	GROMMET, Speedo Cable Through Dash - 2" Wide	9.775
50	GROMMET, Cruise Control Regulator Bracket	3.885

**1967-68 CRUISE CONTROL SYSTEM**

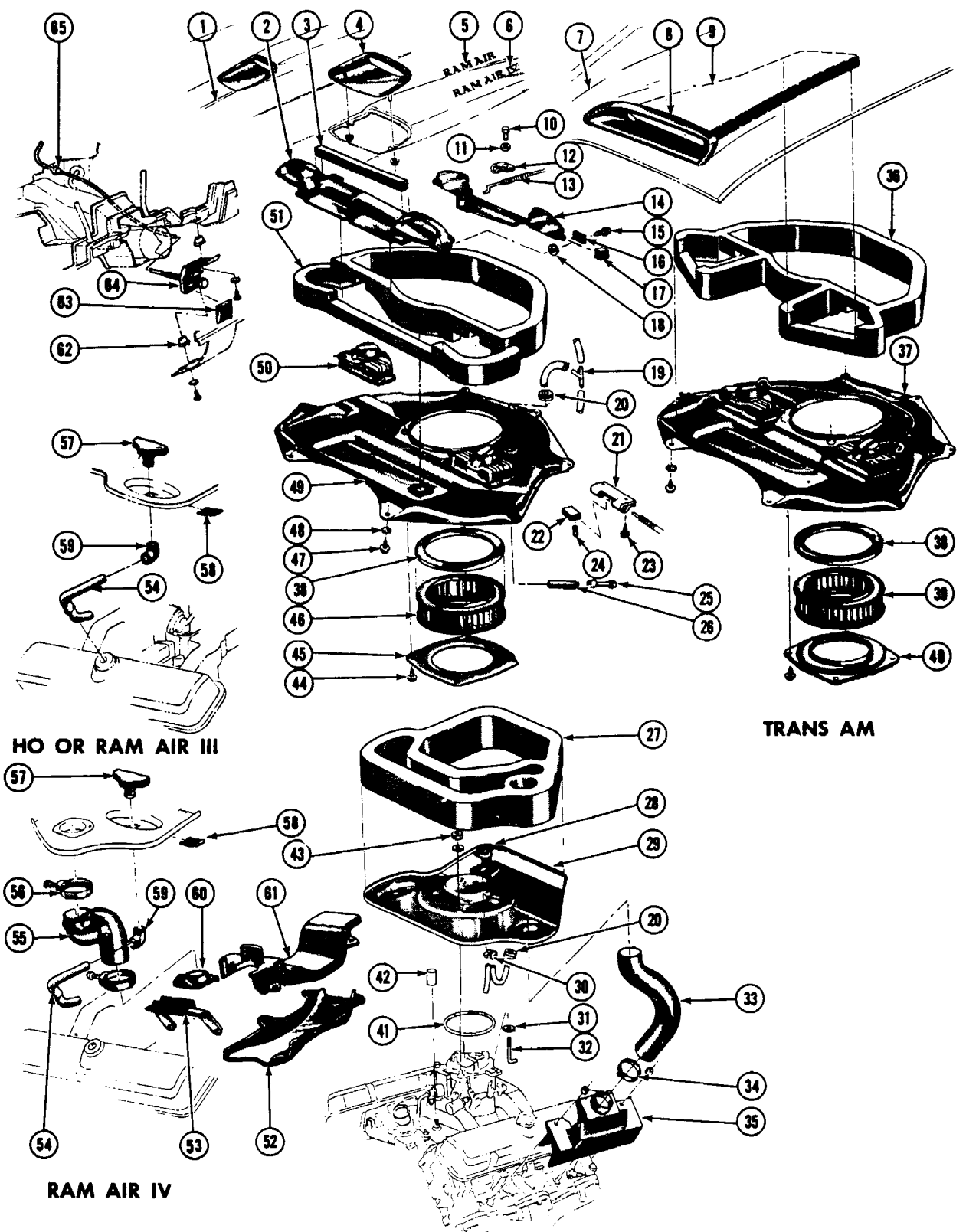


**1967-69 CRUISE CONTROL REGULATOR**

Key	Part Name	Group No.
1	GEAR, Cruise Control Speedometer	3.885
2	PIN, Cruise Control Speedometer Gear	3.885
3	VALVE BODY ASM., (w/Magnet) Regulator	3.887
4	HOUSING, Cruise Control Regulator	3.885
5	BEARING, Cruise Control Regulator Drive Screw	3.885
6	GEAR, Cruise Control Governor Shaft	3.885
7	RING, Carrier Retainer	3.885
8	CARRIER ASM., (w/Weight) Regulator	3.885
9	SHAFT, Cruise Control Governor	3.885
10	WASHER, Cruise Control Governor - Spring	3.885
11	WASHER, Cruise Control Governor - Plain	3.885
12	RING, Cruise Control Governor Shaft Ret.	3.885
13	BEARING, Thrust - (11 Balls)	3.885
14	CUP ASM., Cruise Control Actuator	3.885
15	SPRING, Regulator Governor	3.885
16	CAP, Governor Spring	3.885
17	SUPPORT ASM., Bearing	3.885
18	SPRING, Actuator Pin	3.885
19	SLIDE, Cruise Control Actuator Pin	3.885
20	RESTRICTOR, Cruise Control Regulator Variable	3.885
21	FILTER, Intake	3.885
22	COVER ASM., Regulator	3.885



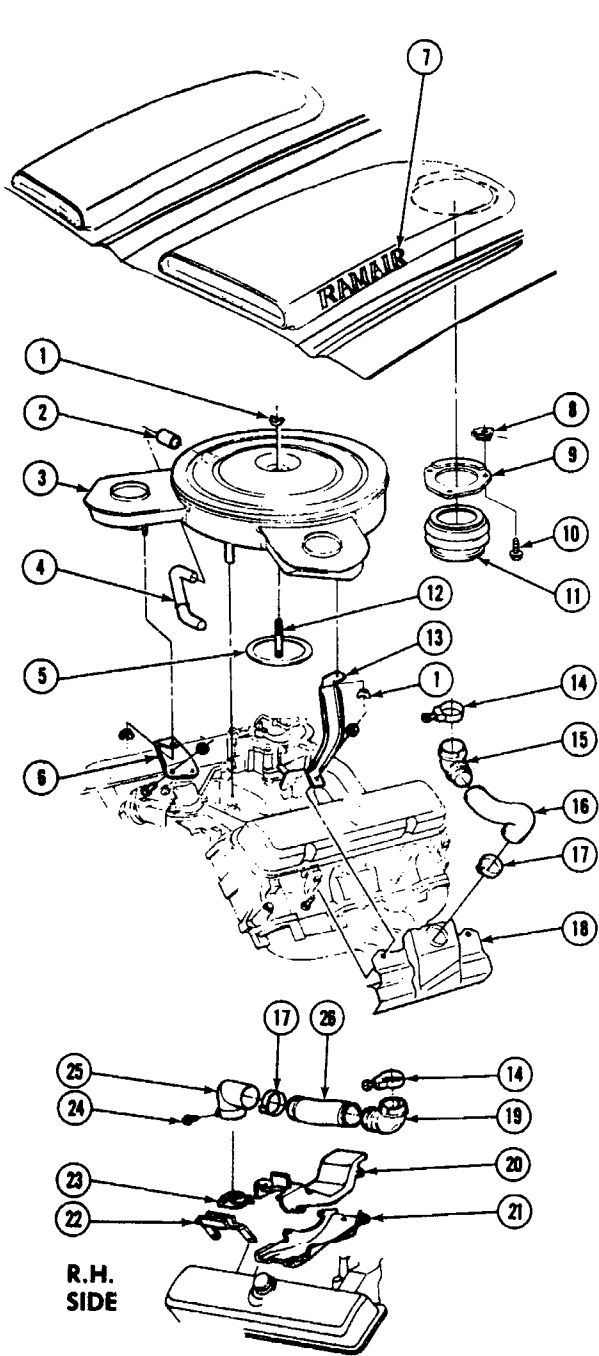




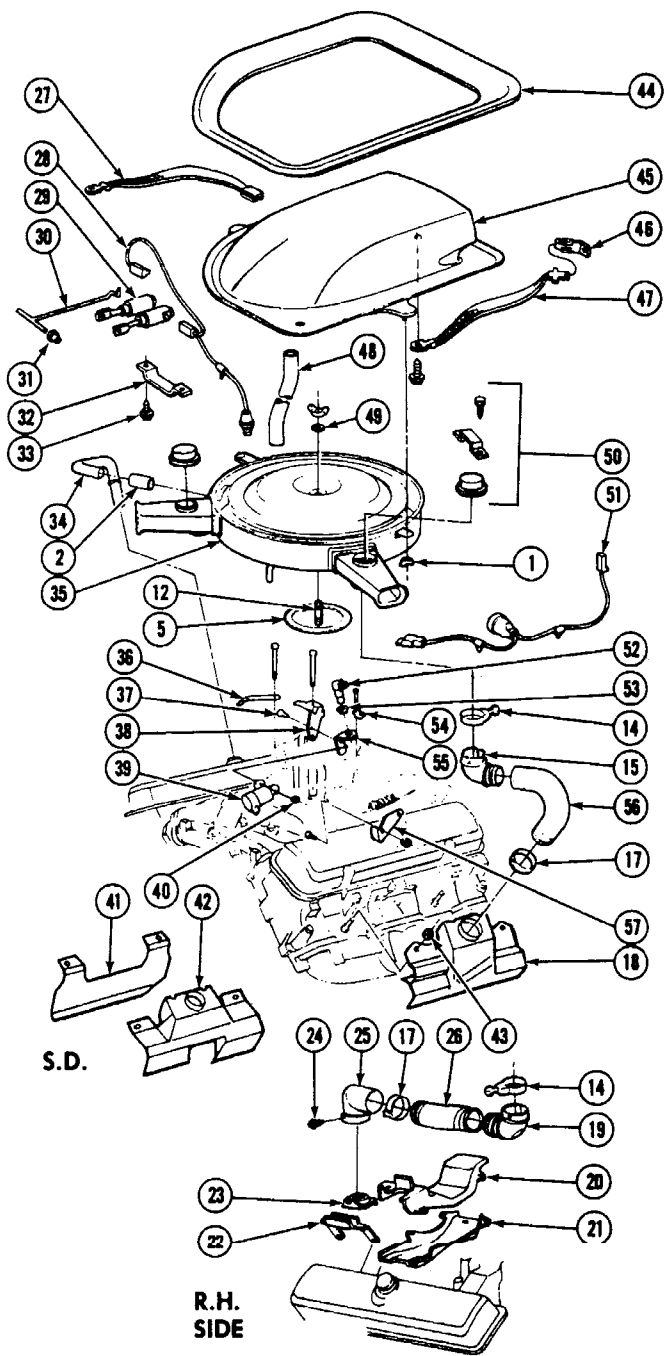
1969 FIREBIRD RAM AIR SYSTEM

**1969 FIREBIRD RAM AIR SYSTEM**

Key	Part Name	Part No.	Group No.
1	PANEL, Hood (Exc. Trans Am)	9797763	8.000
2	HOUSING, Inlet to Hood Valve	546082	3.415
3	SEAL, Valve Housing to Hood	9797623	3.415
4	ORNAMENT, Hood Vent	9794283R.H. - 9794284L.H.	8.030
5	DECAL, Hood Name "Ram Air" - Red	9794722	8.030
	"Ram Air" - White	9794723	8.030
	"Ram Air" - Black	9794721	8.030
6	DECAL, Hood Name "Ram Air IV" - Red	9789042	8.030
	"Ram Air IV" - White	9789043	8.030
	"Ram Air IV" - Black	9789041	8.030
7	PANEL, Hood (Trans Am)	546014	8.000
8	ORNAMENT, Hood Vent	546257R.H. - 546258L.H.	8.030
9	DUCT, Inner Panel	546012R.H. - 546013L.H.	3.410
10	BOLT, Cable to Plate (1/4"-20 x 1/2")	9419000	8.900
11	WASHER, Cable to Plate (9/32" I.D. x 37/64" O.D.)	-	N.S.
12	CLIP, Cable to Baffle	-	N.S.
13	CABLE, Valve to Splice Brkt.	546524	3.415
14	VALVE, Inlet to Hood	9798191	3.415
15	SCREW, Bushing to Hsg. (#10-16 x 3/4")	-	N.S.
16	RETAINER, Valve Shaft Bushing	9797419	3.415
17	BUSHING, Inlet Valve Shaft	9797418	3.415
18	WASHER, Ret. to Valve Hsg. (13/64" I.D. x 13/32" O.D.)	-	N.S.
19	TEE, Sensor Hose (3/16" x 3/16" x 3/16")	540581	3.415
20	GROMMET, Inlet Sensor Hose	9797816	3.415
21	BRACKET, Cable Mounting (2nd Type)	546517	3.415
22	CONNECTOR, Cable Splice (2nd Type)	546516	3.415
23	SCREW, Bracket to Baffle (1/4"-20 x 5/8")	-	N.S.
24	SET SCREW, Cable to Conn. (#8-32 x 3/16")	192208	8.975
25	CONNECTOR, Inlet Vac. Hose	3923213	3.415
26	HOSE, All Ram Air Vacuum (5/32" I.D.)	3830665	8.962
27	SEAL, Baffle to Shroud (400 Exc. HO)	9797913	3.410
	SEAL, Baffle to Shroud (400 HO)	9798027	3.410
28	SENSOR ASM., Air Inlet Thermal	6484242	3.415
29	SHROUD, Air Inlet (400 Exc. HO)	9798113	3.410
	SHROUD, Air Inlet (400 HO)	9798121	3.410
30	NUT, Inlet Thermal Sensor	6484435	3.415
31	NUT, Shroud to Hsg.	9428794	8.921
32	J BOLT, Shroud to Carb. Hsg.	9797693	3.407
33	DUCT, Preheater to Shroud - L.H. (Ram Air IV)	9798750	3.417
34	CLAMP, Duct to Shroud	9792983	3.417
35	SHROUD, Preheater (Ram Air)	9794050	3.417
36	SEAL, Baffle to Hood	546282	3.410
37	BAFFLE, Hood Inlet (400 HO)	546284	3.410
	BAFFLE, Hood Inlet (Ram Air)	546285	3.410
38	SEAL, Cleaner Element	9797438	3.410
39	ELEMENT, Air Cleaner (Ram Air III-IV-HO)	6485167	3.410
40	PLATE, Element Backing (Ram Air III-IV-HO)	9797817	3.410
41	GASKET, Cleaner to Carb.	390452	3.403
42	CAP, Vacuum Stud	9781338	3.764
43	NUT, Shroud to Carb. (1/4"-20)	9419844	8.921
44	SCREW, Plate to Baffle (1/4"-20 x 5/8")	-	N.S.
45	PLATE, Element Backing	9797817	3.410
46	ELEMENT, Air Cleaner	6485167	3.410
47	SCREW, Baffle to Panel (5/16"-12 x 5/8")	9422232	8.977
48	LOCKWASHER, Baffle to Panel (5/16" Ext.)	138485	8.932
49	BAFFLE, Hood Inlet (400 Exc. HO)	9797839	3.410
	BAFFLE, Hood Inlet (400 HO)	9797838	3.410
50	DIAPHRAGM, Air Cleaner	6485087R.H. - 6485088L.H.	3.415
51	SEAL, Baffle to Hood	9798061	3.410
52	SHROUD, Preheater - Lower	9798520	3.417
53	BRACKET, Switch Harness Supt.	9798517	3.765
54	PIPE, Crankcase Vent	9798032	1.762
55	DUCT, Preheater to Shroud	9798524	3.417
56	CLAMP, Duct to Shroud	9793132	3.417
57	ELEMENT, Air Filter	6484966	1.745
58	RETAINER, Filter Element	6420265	1.745
59	ELBOW, Pipe Connecting	9797827	1.762
60	COVER, Preheater Shroud	9798518	3.417
61	SHROUD, Preheater - Upper	9798519	3.417
62	NUT, Control to Panel	1231490	10.252
63	DECAL, Inlet Control	9798222	3.415
64	CONTROL, Air Inlet	546527	3.415
65	GROMMET, Cable Thru Dash (2nd Type)	546525	3.415



**400 RAM AIR**



**TRANS AM  
RAM AIR**

**1970-72 FIREBIRD RAM AIR SYSTEM — 400 & TRANS AM S.D.**

**1970-72 FIREBIRD RAM AIR SYSTEMS—400 & TRANS. AM S.D.**

Key	Part Name	Part No.	Group No.
1	NUT, Air Cleaner Retaining (1/4"-20)	219281	8.920
2	HOSE, Vent Pipe to Air Cleaner	9776770	1.762
3	AIR CLEANER ASM., Carburetor	See Data	3.402
4	PIPE, Crankcase Vent	See Data	1.762
5	GASKET, Cleaner to Carburetor	See Data	3.403
6	SUPPORT, Air Cleaner Snorkel - RH	480774	3.405
7	DECAL, Hood (Ram Air)	See Data	8.030
8	NUT, Air Intake Adapter (#10-16 "U")	9422836	8.921
9	ADAPTER, Ram Air Intake	480776	3.410
10	SCREW, Adapter to Hood Panel (#10-16 x 1/2")	9419303	8.977
11	BOOT, Ram Air Intake	481433	3.410
12	STUD, Cleaner to Carburetor	481341	3.403
13	SUPPORT, Air Cleaner Snorkel - LH	480775	3.405
14	CLAMP, Air Preheater Elbow	2465814	1.166
15	ELBOW, Carb. Air Preheater	479212	3.417
16	DUCT, Air Intake to Air Cleaner - LH	546172	3.417
17	CLAMP, Preheater Duct to Shroud (2 1/4" dia.)	9792983	3.417
18	SHROUD, Carb. Air Preheater	478461	3.417
19	ELBOW, Carb. Air Preheater - RH	479212	3.417
20	SHROUD, Preheater - Upper (1970)	9798519	3.417
	SHROUD, Preheater - Upper (1971)	484948	3.417
	SHROUD, Preheater Upper (1972)	486081	3.417
21	SHROUD, Preheater - Lower (1970)	9798520	3.417
	SHROUD, Preheater - Lower (1971)	484949	3.417
	SHROUD, Preheater Lower (1972)	486082	4.317
22	BRACKET, Switch Harness Support	9798517	3.765
23	COVER, Preheater Shroud (1970)	9798518	3.417
	COVER, Preheater Shroud (1971-72)	481414	3.417
24	SCREW, Elbow to Cover (#8-18 x 3/8")	9417336	8.977
25	ELBOW, Air Preheater Shroud to Duct - RH	480875	3.417
26	DUCT, Air Preheater to Air Cleaner - RH (1970)	480874	3.417
	DUCT, Air Preheater to Air Cleaner - RH (1971-72)	483652	3.417
27	STRAP, Air Scoop Air Valve Ground	-	N.S.
28	WIRE, Solenoids to Valve Switch Wire	8904064	2.480
29	SOLENOID, Air Intake Valve Actuating	1114427	3.440
30	ROD, Intake Solenoid to Valve	481696	3.415
31	BUSHING, Air Intake Valve Rod	481692	3.415
32	CLAMP, Air Intake Solenoid Mounting	481695	3.415
33	SCREW, Solenoid Clamp Attaching (#10-16 x 1/2")	9419303	8.977
34	PIPE, Crankcase Vent	See Data	1.762
35	AIR CLEANER ASM., Carburetor	See Data	3.402
36	CLIP, Air Cleaner Shroud Grounding	-	N.S.
37	BOLT, Idle Stop Bracket Retaining (1/4"-20 x 5/8")	180018	8.900
38	BRACKET, Idle Stop Solenoid Mounting	481706	3.444
39	SOLENOID, Idle Stop	1114423	3.440
40	NUT, Solenoid to Bracket Retaining (1/4"-20)	193232	8.916
41	SHROUD, Preheater - LH - Inner	478460	3.417
42	SHROUD, Preheater - LH - Outer	9794047	3.417
43	NUT, Outer Shroud to Manifold (3/8"-16)	124829	8.916
44	SEAL, Air Intake Scoop to Hood	481697	3.410
45	SCOOP & ADAPTER, Air Intake	481689	3.410
46	TERMINAL, Adapter to Ground Strap	-	N.S.
47	STRAP, Adapter to Dash Ground	537715	9.663
48	HOSE, Drain	-	N.S.
49	WASHER, Air Cleaner Retaining Nut (1/4")	121753	8.932
50	DIAPHRAGM PKG., Air Inlet	6484248RH-6484246LH	3.415
51	WIRE, Air Valve Switch to Solenoid Wire	8904065	2.480
52	SWITCH, Air Intake Valve Solenoid Actuating	3959115	3.415
53	CLIP, Solenoid Switch Retaining	9796744	3.885
54	CLIP, Switch to Solenoid Wire Retainer	-	N.S.
55	BRACKET, Air Intake Valve Switch (1971)	481688	3.415
	(1972)	481706	3.415
56	DUCT, Air Preheater to Air Cleaner	479482	3.417
57	LEVER, Air Intake Valve Switch Actuator	484178	3.415

